



A look back at ...

## **Summer School 2013**

# of the International Partnership on Mitigation and MRV

Tracking Progress and MRV for  
Greenhouse Gas Emission Reductions



**International Partnership**  
on Mitigation and MRV

# Facts and Figures

- August 20th to 28th, 2013
- 24 participants from 19 countries
- 8 days
- Hanoi, Vietnam



- **International experts from:**
  - the World Resources Institute (WRI),
  - Ricardo-AEA,
  - Ecofys,
  - Perspectives,
  - South Pole,
  - CAOS,
  - Global Climate Change Consultancy (GTripleC),
  - The Energy and Resources Institute India (TERI),  
and
  - the Deutsche Gesellschaft für Internationale Zusammenarbeit (GIZ)
  
- **Almost all participants shared their experiences**



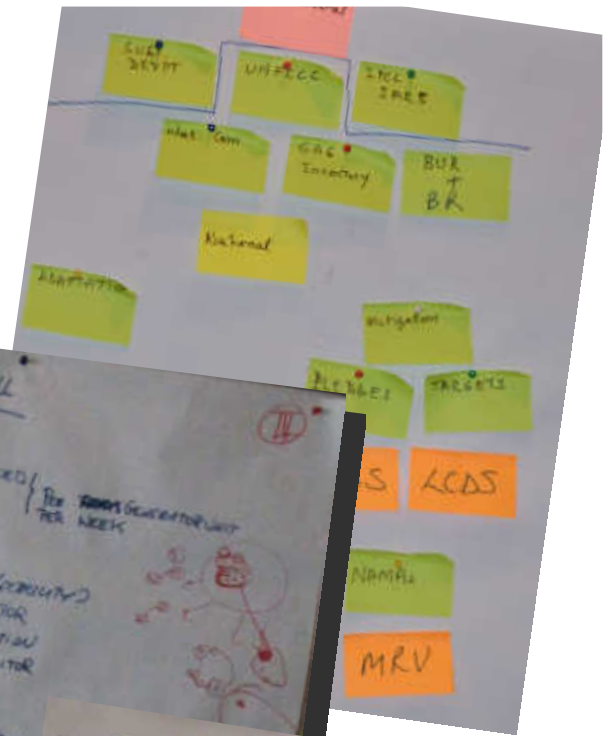
# Overview

Day 1	Day 2	Day 3	Day 4
Introduction  Background on MRV and accounting	Inventories  Development of emission scenarios and baselines	NAMA prioritization and selection	NAMA finance
Day 5	Day 6	Day 7	Day 8
Excursion to Cuc Phuon National Parc	MRV of NAMAs	Tracking Progress	Wrap-up  Identification of future topics



# Farmers (IV)

- produced (if lack of trust in distribution company)
- Whiffed into grid (to ensure payment!) (by grid operator)
- no interest to report residue input into digester
- conditional to underlying contract for installation of digester, we will report data as long as we have net financial benefit
- no interest in third-party verification (unless it generates direct benefit, e.g. by uncovering meter manipulation)
- data report can help to trigger maintenance by NHTA organizers



### INDICATORS USEFUL

SCALE OF WASTEWATER (CW)  
 AMOUNT OF ELECTRICITY PRODUCED  
 AMOUNT OF WASTEWATER  
 AIR EMISSION FACTOR

HOW TO MEASURE THE UNUSUED ELECTRICITY?  
 WAYS - THROUGH GRID OPERATOR  
 THROUGH OWN CONSUMPTION  
 CHALLENGING BECAUSE METER GRID IS OWN CONSUMPTION

BENEFITS

NUMBER OF WASTEWATER INDICATOR FROM UTILIZATION OF WASTE. AMOUNT WASTE PRODUCED ELECTRICITY SUPPLY. NUMBER OF ANIMAL BENEFIT. PRICE - AMOUNT OF PRODUCED AIR QUALITY WASTE WASTEWATER

NUMBER OF BIODIGESTER FACILITY. NUMBER OF FACILITY. BURDENING FOR...

SEPARATION OF WASTEWATER

AUTOMATIC SYSTEM (PUBLIC METER) THROUGH GRID OPERATOR

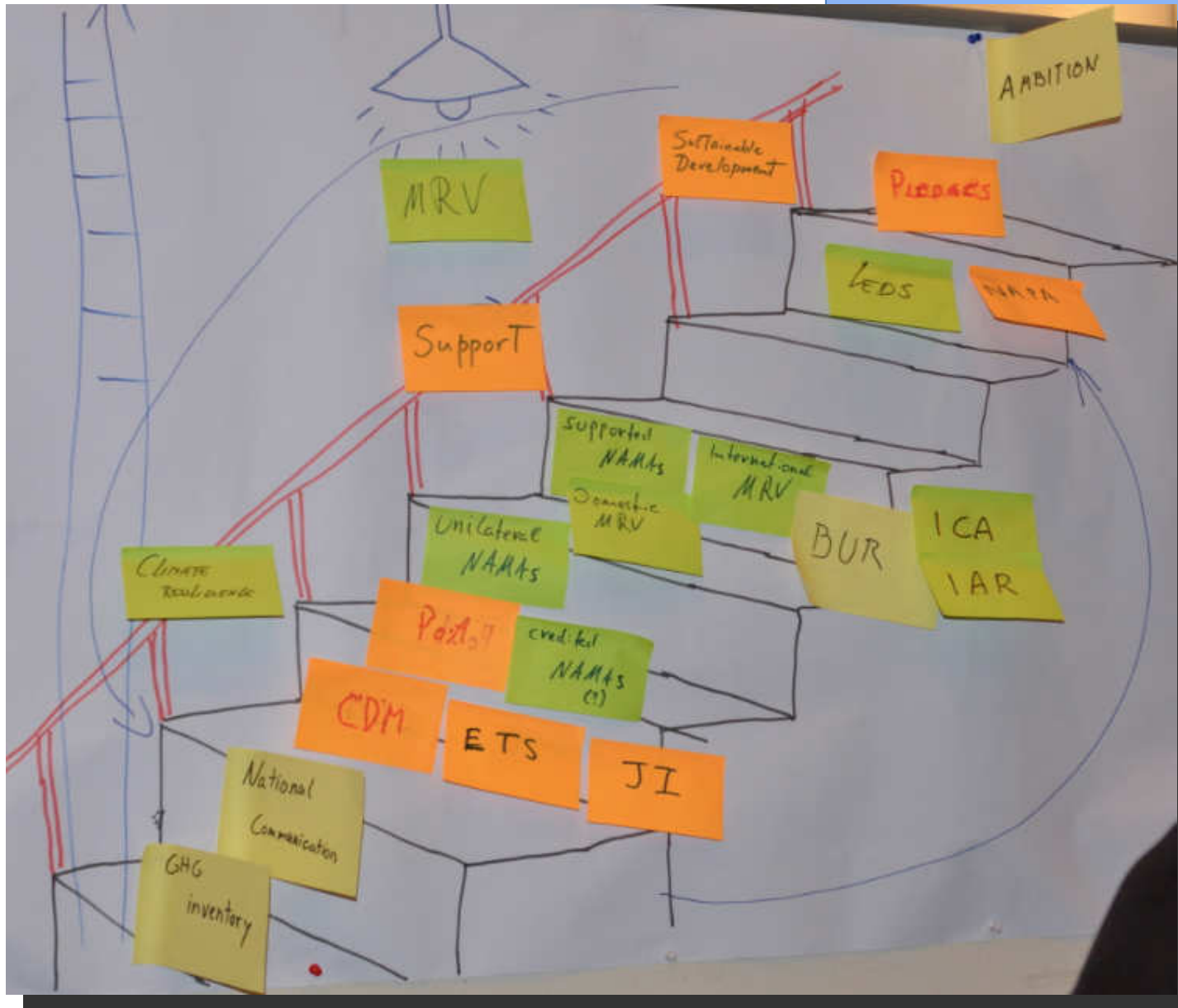
### INDICATORS

GHG	CO-BENEFITS/cost
<ul style="list-style-type: none"> <li>kWh produced</li> <li>Qty of waste</li> <li>Types of agric waste (Disaggregation)</li> </ul>	<ul style="list-style-type: none"> <li>Number of substances on the national grid</li> <li>Local Environmental quality improved indicators</li> <li>Price of feed stalk</li> <li>Price of fertilizer</li> <li>Qty of fertilizer flow from digester</li> <li>Qty of liquid byproduct from digester</li> <li>Number of jobs created</li> </ul>

② DATA-COLLECTION METHODS

- Meter & invoice from grid operator (kWh) - Daily / Monthly
- Weighing of waste by type (Qty of waste, type) - daily at facility - Commonly when feed to digester
- Stubs (waste) from grid operator

# Findings



# Findings on the dev. of emission scenarios and baselines

- An **inventory** is a necessary starting point. Sufficient institutional capacity is needed to ensure continuous data collection and processing for BURs/NatComs.
- Wide range of possible modelling approaches exists. Models vary regarding complexity and information needs.



- Assumptions matter! Avoid „black boxes“!  
Do not rely exclusively on external consultants.
- Which mitigation policies are to be included in the baseline? → Baseline choice is a political decision.

# Findings on NAMA development and prioritization



- Wide range of options for NAMAs (Project, policy, strategy/target level) ... Influences NAMA development and prioritization
- Strong government agency is needed to coordinate NAMA development, and mediate stakeholder input.
- Criteria for NAMA prioritization
  - LEDS useful starting point for NAMA development but should not slow down identification of NAMAs
  - Stakeholders will have different views about NAMA priorities (co-benefits, transformational change, etc.)
  - Multi-criteria analysis may be difficult to implement
  - Criteria for transformational effect are likely to be qualitative and consensus remains to be developed
  - Linked to NAMA finance!

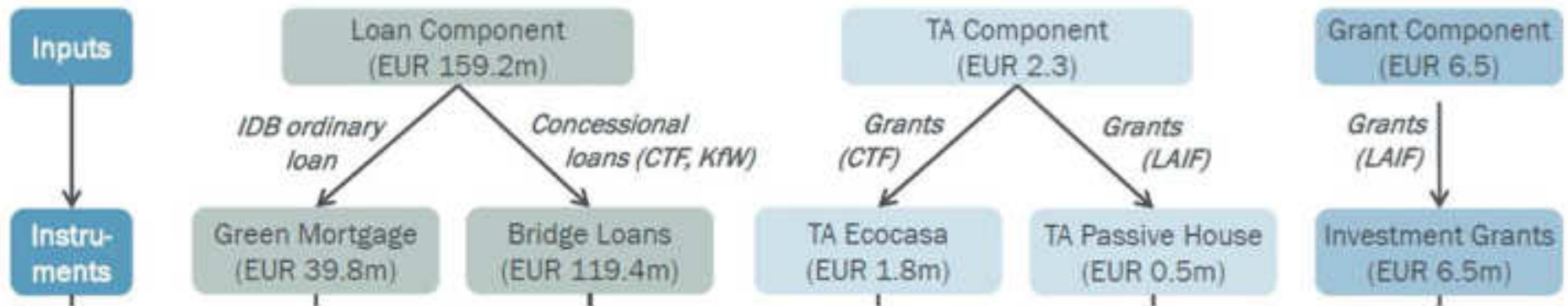


# Findings on NAMA finance

- Countries expect significant financing from donors
- So far, financing is focused on NAMA development.
- NAMA facility as a first step for implementation of NAMAs. Important role of technical assistance
- Donors expect substantial part of financing to come from implementing countries
- Can old and new market mechanisms come to the rescue? - Not at current price levels, maybe under increased ambition...
- The few NAMAs under implementation all have a mix of financing options



# NAMA financing in components





## Excursion to Cuc Phuong National Park



# Cultural Evening







## Excursion to a cement factory



# Findings on MRV of NAMAs

- UNFCCC level
  - Criteria: voluntary, pragmatic, non-prescriptive, non-intrusive, country driven
  - Report in BURs
  - Still differences in opinions regarding MRV for domestic NAMAs
  - Fear of some countries that guidelines might de facto become prescriptive



**Many MRV options available** on which to build  
GHG: project-based: Kyoto Mechanisms, policy-based:  
new WRI draft  
standard, strategy-based: IPCC  
Transformational impacts: transaction cost for  
overcoming barriers  
Co-benefit: Social Carbon, CCBS...

Internal and external verification (2nd/3rd party)?

# Findings on pledges / tracking progress



- Setting of pledges
  - Types of pledges vary – base year vs baseline, absolute vs intensity, single vs multiple target year
  - Try to make pledges as easily comparable as possible
- Ambition and its increase
  - Ratcheting up of pledges already before 2020?
  - Increase in ambition will be a long and difficult
- Tracking of progress (accounting regime)
  - Avoidance of double counting of mitigation action is challenging but crucial
  - Voluntary reporting in BURs / BR / in contracts of non-UNFCCC mechanisms









**Summer School 2014  
Punta Cana  
Dominican Republic**

# What is different this year?

- 1 day less to reduce the degree of exhaustion
- Dinners mostly within the hotel
- No formal facilitator. Different staff members will take that role
- Fewer international experts, more presentations from the participants

... Please resist the temptation..

