

NATIONAL ACCOUNTABILITY

THE COLOMBIAN EXPERIENCE

Accountability of the (NDC)

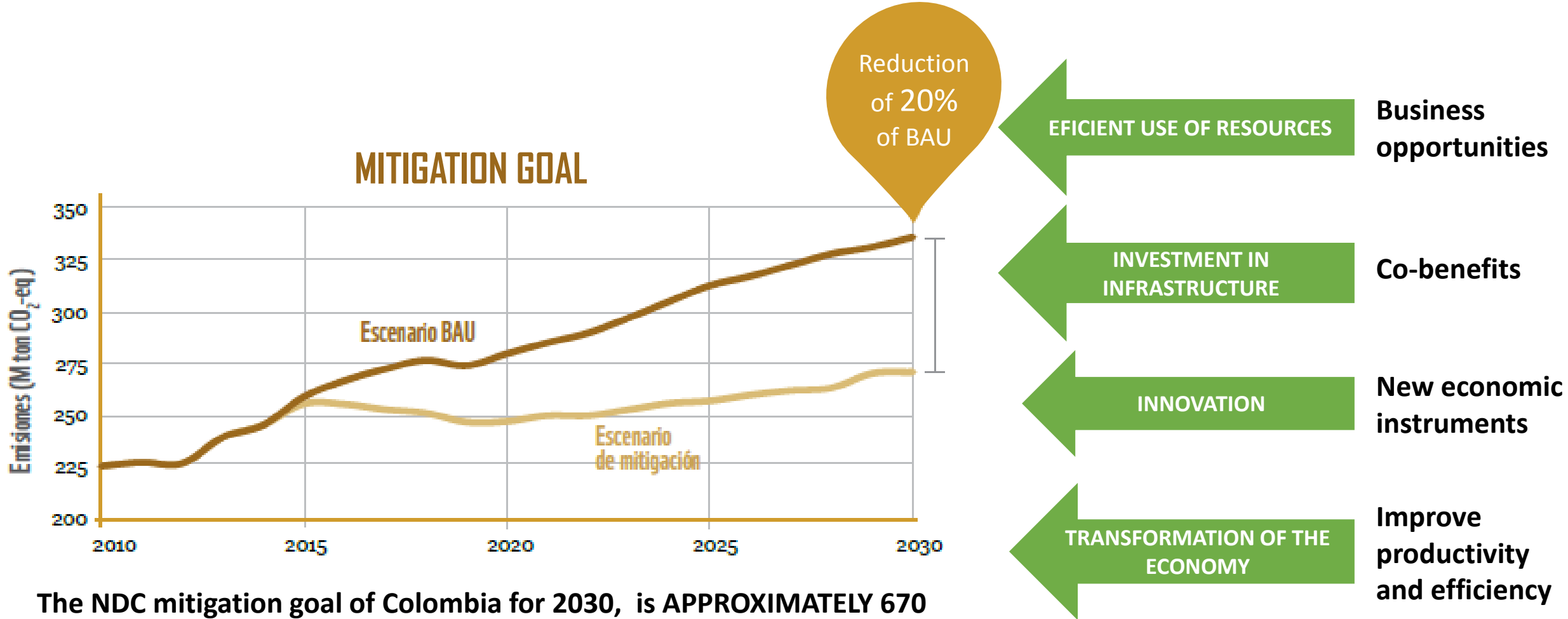
May, 2017



CONTENIDO

- The NDC mitigation goal of Colombia
- National MRV approach
- Five steps methodology in Colombia
- Next steps

The NDC mitigation goal of Colombia



The NDC mitigation goal of Colombia for 2030, is APPROXIMATELY 670 millions of CO₂-e Tons in the period 2015-2030.

NATIONAL MRV APPROACH

IPCC Guidelines
GHG Protocol
ISO 14064

Emissions

GHG Inventories (national and regionals)

Programme for voluntary report

Common factor: Transparency, indicators, co-benefits report, mitigation and adaptation scope

Mitigation Actions

NAMA
MDL y POA
REDD+
PDBC - PEMV

- UNFCCC guidelines for MDL y REDD+

- Guidelines for NAMAs and other mitigation initiatives formulation

Climate finance

- International
- National
- Sub-national

Public and private sources

Guide for the identification of finance sources

Developed for decision makers at national and regional levels



NATIONAL MRV APPROACH

Emissions

- Design of SINGEI
- Sinergies with other national information systems
- Voluntary corporate reporting program
- 3 NATCOMs – 2 BURs

Mitigation actions

- National Registry of mitigation actions
- Accountability rules
- Carbon tax law
- Guidelines for NAMAs and other mitigation initiatives formulation

Climate finance

- Climate investment in national public sources
- Guide for the identification of finance sources

- Conceptualization. 2015-2016
- Protocols and guidelines. 2015-2016
- First technologic developments. 2016
- Registries for data collection and analysis platforms. 2016
- Legislation and regulation documents 2017

5 STEPS. Methodology

- **STEP 1. To detail the NDC goal**
- **STEP 2. To choose a method of calculation of progress towards the NDC goal**
- STEP 3. To define the needs of data to monitoring the NDC goal
- STEP 4. To define the management model for the accountability
- STEP 5. Implementation and monitoring

STEP 1. To detail the NDC goal (1)



- Technical work

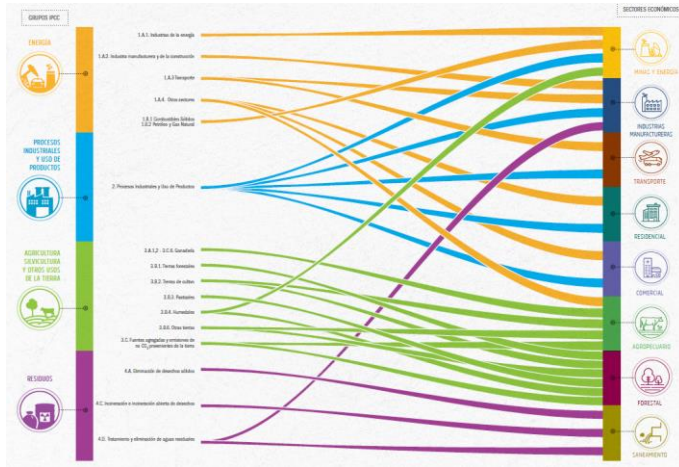
- Data mining

- Workshop with sectorial experts and GHG inventory team and institutional groups

- 8 calls between GIZ experts and technical groups of Colombia



STEP 1. To detail the NDC goal (2)

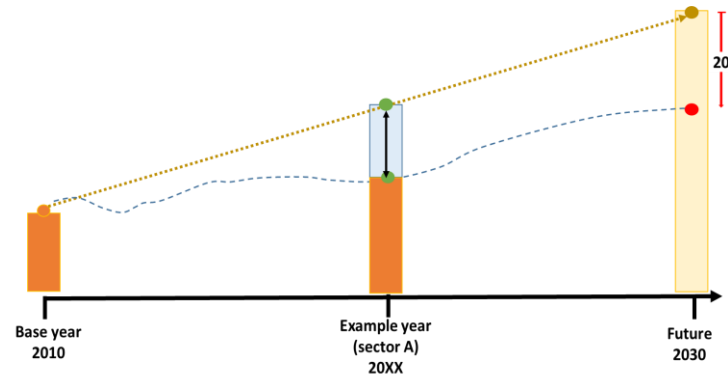


GHG national and sectorial emissions - baseline

- To understand national GHG inventories data
- Methodological changes from year to year about GHG national emissions
- To clarify data sources, base year, categories, etc.

Projections and assumptions

- Drivers
- Methodology
- Key stakeholders



Policies and actions – baseline

- Inclusion of mitigation actions in the base line, quantification, categories, etc.
- Sectorial data sources
- Inventariability

STEP 2. To choose a method of calculation of progress towards the NDC goal

Baseline deviation on the year (t)

Fórmula 1

$$Avance(t) = \frac{BAU - Inventario_{GEI}}{BAU}$$

Baseline deviation on the year (t) alternative methods

También existen dos opciones de calcular la desviación de la línea base utilizando los impactos de las PyM:

Fórmula 2

$$Avance(t) = \frac{Impactos_{PyM}}{BAU}$$

Fórmula 3

$$Avance(t) = \frac{Impactos_{PyM}}{Inventario_{GEI} + Impactos_{PyM}}$$



Línea base (BAU)											
Millones de t de CO ₂ e											
	2010	2011	2012	2013	2014	2015	2016	2017	2018	2019	2020
Nacional	224,0	229,2	234,4	239,6	244,8	250,0	255,2	260,4	265,6	270,8	276,0
Sectores cartera											
5. MME	29,4	30,3	31,2	32,1	33,0	33,9	34,8	35,7	36,6	37,5	38,4
6. MinCT	22,0	22,8	23,6	24,4	25,2	26,0	26,8	27,6	28,4	29,2	30,0
7. MADR	54,5	54,8	55,1	55,4	55,7	56,0	56,3	56,6	56,9	57,2	57,5
8. MVCT	14,8	15,0	15,2	15,4	15,6	15,8	16,0	16,2	16,4	16,6	16,8
9. MinTransporte	22,7	23,3	23,9	24,5	25,1	25,7	26,3	26,9	27,5	28,1	28,7
10. MADS	1,4	1,4	1,4	1,4	1,4	1,4	1,4	1,4	1,4	1,4	1,4
11. Banca Comercial Institucional	1,4	1,4	1,4	1,4	1,4	1,4	1,4	1,4	1,4	1,4	1,4
12. Emisiones por deforestación	78,3	78,3	78,3	78,3	78,3	78,3	78,3	78,3	78,3	78,3	78,3
13. Test	0,0	0,0	0,0	0,0	0,0	0,0	0,0	0,0	0,0	0,0	0,0
14. Suma sectores cartera	224,0	227,9	231,8	235,7	239,6	243,5	247,4	251,3	255,2	259,1	263,0
Sectores IPCC											
15. Energía	71,2	71,3	71,4	71,5	71,6	71,7	71,8	71,9	72,0	72,1	72,2
16. AFOLU	130,3	138,7	147,1	155,5	163,9	172,3	180,7	189,1	197,5	205,9	214,3
17. Residuos	11,7	11,8	11,9	12,0	12,1	12,2	12,3	12,4	12,5	12,6	12,7
18. Test	0,0	0,0	0,0	0,0	0,0	0,0	0,0	0,0	0,0	0,0	0,0
19. Suma sectores IPCC	213,2	221,8	230,4	239,0	247,6	256,2	264,8	273,4	282,0	290,6	299,2
Contribución											
20. Nacional	20%	20%	20%	20%	20%	20%	20%	20%	20%	20%	20%
Repartición entre años únicamente para el seguimiento											
21. Millones de t de CO ₂ e	2010	2011	2012	2013	2014	2015	2016	2017	2018	2019	2020
Nacional	224,0	229,2	234,4	239,6	244,8	250,0	255,2	260,4	265,6	270,8	276,0
Repartición entre sectores y entre años únicamente para el seguimiento											
22. Relativo	20%	20%	20%	20%	20%	20%	20%	20%	20%	20%	20%
Sectores cartera											
23. MME	20%	20%	20%	20%	20%	20%	20%	20%	20%	20%	20%
24. MinCT	20%	20%	20%	20%	20%	20%	20%	20%	20%	20%	20%
25. MADR	20%	20%	20%	20%	20%	20%	20%	20%	20%	20%	20%
26. MVCT	20%	20%	20%	20%	20%	20%	20%	20%	20%	20%	20%
27. MinTransporte	20%	20%	20%	20%	20%	20%	20%	20%	20%	20%	20%
28. MADS	20%	20%	20%	20%	20%	20%	20%	20%	20%	20%	20%
29. Banca Comercial Institucional	20%	20%	20%	20%	20%	20%	20%	20%	20%	20%	20%
30. Emisiones por deforestación	20%	20%	20%	20%	20%	20%	20%	20%	20%	20%	20%

NEXT STEPS

- Steps 2, 3, 4 and 5 of the methodology
- Involve key stakeholders at technical and high level
- Keep looking for synergies with sectorial and national systems
- Stablish institutional arrangements
- Improve sectorial and regional data
- Interoperability among systems

Thanks!

Camila Rodríguez Vargas

DCRodriguez@minambiente.gov.co

Sebastian Carranza

SCarranza@minambiente.gov.co

Dirección de Cambio Climático