



Domestic MRV Systems for effective long-term climate action

Thapelo Letete
Environmental Resources Management
South Africa

The business of sustainability

© Copyright 2017 by ERM Worldwide Group Limited and/or its affiliates ("ERM"). All Rights Reserved. No part of this work may be reproduced or transmitted in any form or by any means, without prior written permission of ERM.



ETF = Enhanced Data Requirements

Timelines	Current data requirements	ETF data requirements
Annually	<div style="background-color: #0070C0; color: white; padding: 5px; text-align: center;"> NATIONAL GHG INVENTORIES </div>	<div style="background-color: #0070C0; color: white; padding: 5px; text-align: center;"> NATIONAL GHG INVENTORIES </div>
Periodically <i>(no less frequent than biennially)</i>	<div style="background-color: #0070C0; color: white; padding: 5px;"> BIENNIAL REPORTS <ol style="list-style-type: none"> 1. GHG inventory 2. QEERTs 3. Progress in achieving QEERTs 4. Emission projections 5. Support given to developing countries </div> <div style="background-color: #0070C0; color: white; padding: 5px; margin-top: 10px;"> BIENNIAL UPDATE REPORTS <ol style="list-style-type: none"> 1. National circumstances 2. GHG inventory update 3. Mitigation actions 4. Support needed & received from developed countries </div>	PERIODIC REPORTS <ol style="list-style-type: none"> 1. GHG inventory 2. Progress in achieving NDC 3. Support given to developing countries <i>[Developing countries should]</i> 4. Support needed and received <i>[developing countries only; should]</i> 5. Climate change impacts and adaptation information [Parties should]
No less frequent than every 4 years	<div style="background-color: #0070C0; color: white; padding: 5px; text-align: center;"> NATIONAL COMMUNICATIONS </div>	<div style="background-color: #0070C0; color: white; padding: 5px; text-align: center;"> NATIONAL COMMUNICATIONS </div>
Every 5 years		Updated NDCs

KEY

Current requirements	New requirements



MRV Needs under the PA:

	Brazil	China	Colombia	Dominican Republic	Ghana	Kenya	Mexico	Republic of Korea	South Africa	Thailand
7 (a) National GHG inventories										
7 (b). Info for tracking mitigation-components of NDCs										
- GHG inventory	Economy-wide	Economy-wide	Economy-wide	Economy-wide	Economy-wide	Economy-wide	Economy-wide	Economy-wide	Economy-wide	Economy-wide
- Other info		GDP	BAU info		BAU info	BAU info	BAU info	BAU info		BAU info
- Mitigation actions	---	non-fossil share of energy; Forest stock volume, etc	---	---	Energy, AFOLU & Waste programmes	A number of targets (e.g. tree cover)	---	---	Carbon tax, DEROs, carbon budgets, regulatory standards & controls	---
- Information on market use	Yes	No Mention in NDC	Yes	Yes	For Waste, energy & REDD+ mitigation	Yes	Yes	Yes	No mention in NDC	Yes
8. climate change impacts										
8. adaptation actions										
9. Finance provided										
9. Capacity-building provided										
9. Technology-transfer provided										
10. Finance received										
10. Capacity-building received										
10. Technology-transfer received										

Enhanced Domestic Institutional Capacity needs:

Enhanced Information and data requirements

NECESSITATES

Enhanced Domestic Institutional Capacity

MRV Institutionalization in 1/CP.21

- **84.** Decides to establish a **Capacity-building Initiative for Transparency** in order **to build institutional and technical capacity**, both pre- and post-2020; this initiative will support developing country Parties, upon request, in meeting enhanced transparency requirements as defined in Article 13 of the Agreement in a timely manner;
- **85.** Also decides that the Capacity-building Initiative for Transparency will aim:
 - (a) To **strengthen national institutions for transparency-related activities in line with national priorities**;
 - (b) To provide relevant tools, training and assistance **for meeting the provisions stipulated in Article 13 of the Agreement**;
 - (c) To assist in the improvement of transparency over time;
- **Article 13.15.** Support shall also be provided for the building of **transparency-related capacity** of developing country Parties on a continuous basis.

MRV Needs at domestic-level:

Any successful policy, particularly environmental policy, depends on information about the extent of the problems and information about the relative performance of policy measures to address the problems (*Esty, 2004*).

The role of MRV at domestic level (*Sigh & Vieweg, 2015; Wiener, 2015; GIZ 2014*):

1. Supporting and informing the design & planning of climate policies, strategies and laws (PSLs), and ensure policy coherence
2. Evaluating alternative policy instrument designs
3. Assessing the performance of national PSLs (PSL evaluation)
4. Promoting accountability and fostering credibility
5. Help identifying national priorities, challenges, opportunities and international support requirements
6. Enabling adaptive learning
7. To demonstrate impact of resources to donors, etc.

E.g South Africa's domestic Finance MRV needs

1. To provide an overview of the landscape of climate finance supporting the country's transition to a lower-carbon and climate-resilient society
2. To understand the resource needs for funding South Africa's climate response actions
3. Tracking and monitoring the impact or contribution of funds deployed towards climate actions – successes and failures
4. To help improve transparency in climate finance inflows by
 - Helping to minimise “double-counting” of outcomes (emission reductions, etc.) and
 - Helping to identify “double-dipping” on same pool of resources
5. To provide an estimate of the degree to which other funds have been leveraged by public finance
6. To provide an estimate of the extent to which public climate finance has catalysed action (e.g. programmes going to scale, triggering more investment by private sector)
7. To help promote a country approach when mobilising and applying for international finance cooperation

MRV System Principles:

PRINCIPLES	Paris Agreement, Para 92	Climate Policy Initiative Evaluation	6 Dimensions of Data Quality (Gorgens & Zall, 2009)	GHG Inventory TACCC principles	IGES Support MRV systems Evaluation criteria
TRANSPARENCY	Transparency				
COMPARABILITY	Comparability				
CONSISTENCY	Consistency				
ACCURACY	Accuracy; avoid double-counting; Ensure Environmental Integrity & quality in line with obligations				
TIMELINESS	Frequency of reporting in line with respective obligations				
COMPLETENESS	Completeness				
INTEGRATION	Avoid duplication				
USEFULNESS					

CASE STUDY: Domestic MRV Needs & Systems*:

1. Climate change Development Plan 2011 – 2030 (CCDP) (2011)
2. National Development Strategy 2011 – 2030 (NDS) (2011)
3. National Constitution – Article 194 (2010)
4. National Adaptation Plan of Action (2008)

National MRV system (*design phase*)

DOMINICAN REPUBLIC

BRAZIL

1. National Policy on Climate change (Law 12, 187) (2009)
2. National Climate Plan on Climate change (2007)

Modular System for Monitoring and Follow-up of Greenhouse Gas Emission Reductions – SMMARE (*design phase*)

1. Five-year Plans: (currently 13th)
2. National Plan to cope with climate change (2014 - 2020)
3. National Strategy of Climate Change Adaptation (2013)

- Climate Change Statistical Indicator and Basic indicator System
- GHG Emission Accounting and Reporting system
- GHG Emission Control Target-based Performance system

CHINA

KENYA

1. National Climate Change Response Strategy (2010)
2. Kenya Climate Change Action Plan (2013)

Kenya's MRV+ System

SOUTH AFRICA

1. National Climate Change Response Policy (2011)
2. National Development Plan - Vision 2030 (NDP) (2011)

- National Climate Change Response M&E system
- National GHG inventory system

Initial Assessment – Completeness only:

DOMINICAN REPUBLIC		Elements covered							
		National GHG emissions	Mitigation actions	Adaptation actions	Climate Finance	Capacity-building	Technology development & transfer	Climate impacts	Market Use
Laws & Policies	Climate change Development Plan 2011 – 2030 (CCDP) (2011)	√	√	---	√	---	---	---	
	National Development Strategy 2011 – 2030 (NDS) (2011)	---	√	√	---	√	---	√	
	National Constitution – Article 194 (2010)	---	---	√	---	---	---	√	
	National Adaptation Plan of Action (2008)	---	---	√	√	√	√	√	
MRV	National MRV system (<i>design phase</i>)	√	√	---	√	---	---	---	---
ASSESSMENT									

KENYA		Elements covered							
		National GHG emissions	Mitigation actions	Adaptation actions	Climate Finance	Capacity-building	Technology development & transfer	Climate impacts	Market Use
Laws & Policies	National Climate Change Response Strategy (2010)	√	√	√	√	√	√	√	
	Kenya Climate Change Action Plan 2013 - 2017 (2013)	√	√	√	√	√	√	√	
MRV	Kenya's MRV+ System	√	√	√	---	---	---	---	---
ASSESSMENT									

Initial Completeness Assessment:

SOUTH AFRICA		Elements covered							
		National GHG emissions	Mitigation actions	Adaptation actions	Climate Finance	Capacity-building	Technology development & transfer	Climate impacts	Market Use
Laws & Policies	National Climate Change Response White Paper (NCCRWP) (2011)	✓	✓	✓	✓	✓	✓	✓	
	National Development Plan - Vision 2013 (NDP) (2011)	✓	✓	✓	✓	✓	✓	✓	
MRV	National Climate Change Response M&E system	✓	✓	✓	✓	✓	---	✓	
	National GHG inventory system	✓	---	---	---	---	---	---	
ASSESSMENT									N/A

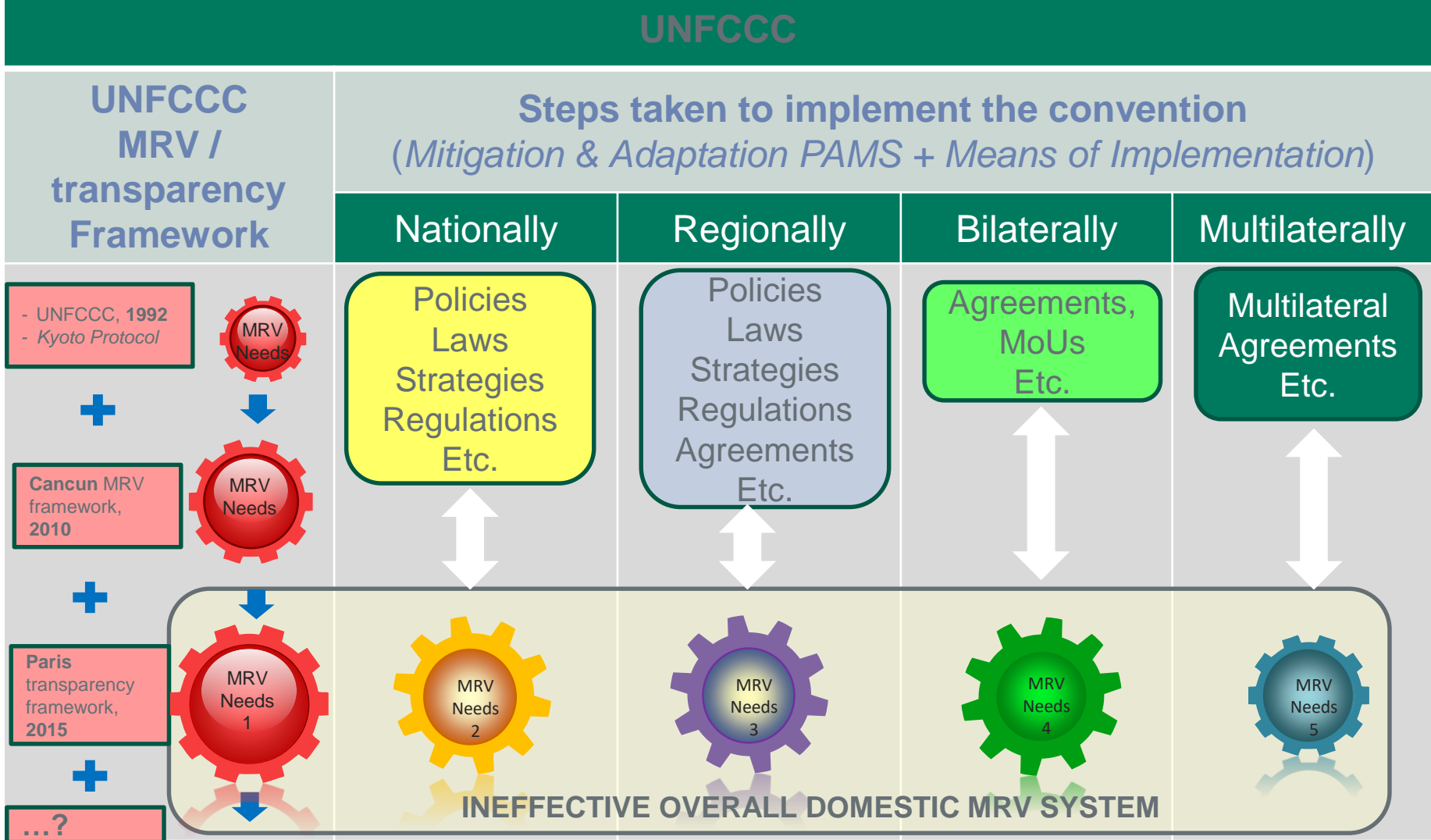
SUMMARY	COVERAGE							
	National GHG emissions	Mitigation actions	Adaptation actions	Climate Finance	Capacity-building	Technology development & transfer	Climate impacts	Market Use
Brazil								
China								N/A
Dominican Rep.								
Kenya								
South Africa								N/A

What is a “Domestic MRV System”?

MRV or M&E system? – No standard, internationally-agreed definition of either term!

What it does is more important than what it is called:
Domestic Institutional arrangements and information systems that support the systematic provision of climate-related data to respond to international & domestic climate change information needs.

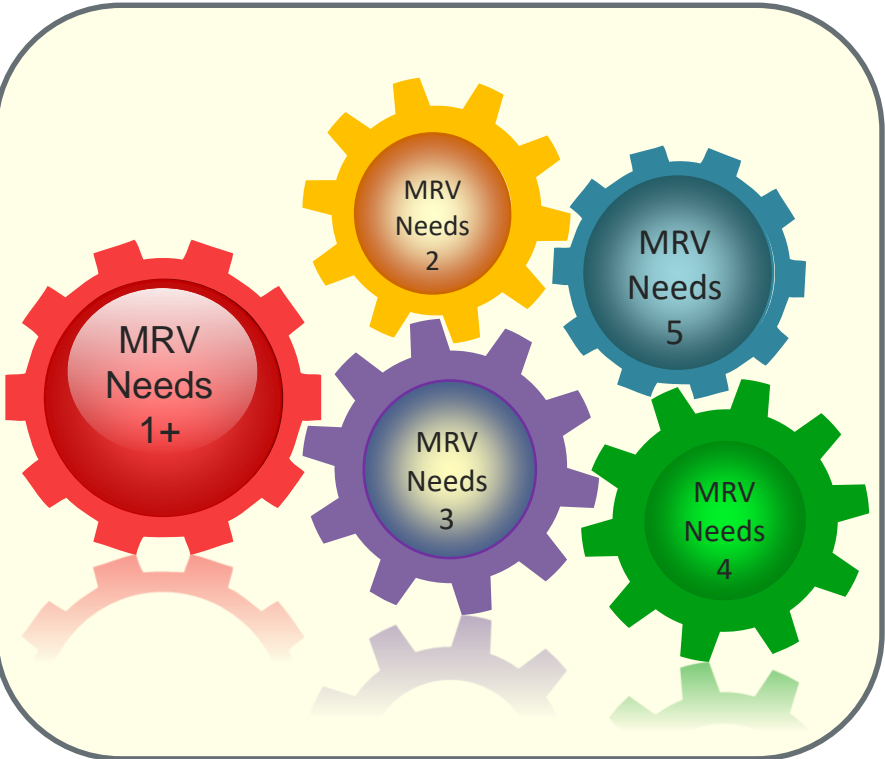
Hypothesis



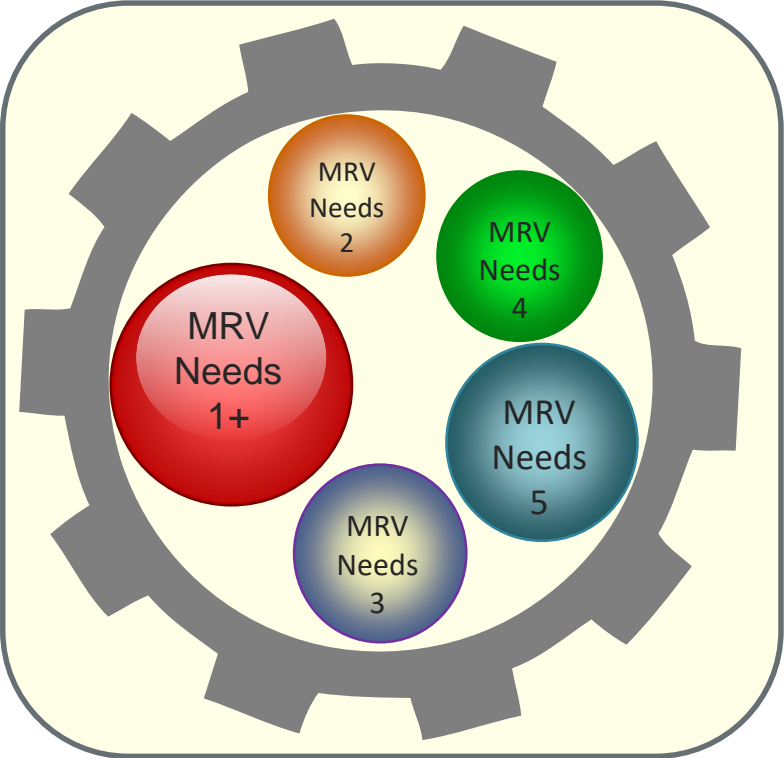
VS.

Hypothesis cont..

VS.



or



THANK YOU!

ERM Around the World

ERM has over 160 offices across the following countries and territories worldwide.

Argentina	Norway
Australia	Panama
Belgium	Peru
Brazil	Poland
Canada	Portugal
China	Puerto Rico
Chile	Romania
Colombia	Russia
France	Senegal
Germany	Singapore
Hong Kong	South Africa
India	South Korea
Indonesia	Spain
Ireland	Sweden
Italy	Switzerland
Japan	Taiwan
Kazakhstan	Thailand
Kenya	The Netherlands
Malaysia	United Arab Emirates
Mexico	United Kingdom
Mozambique	United States of America
Myanmar	Vietnam
New Zealand	



Thapelo Letete

Technical Director

Energy & Climate Change

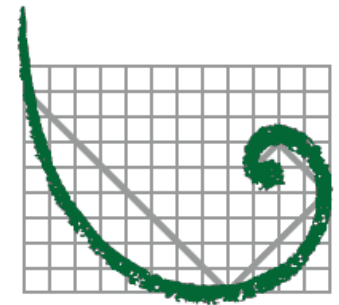
Thapelo.letete@erm.com

+27117984300

Johannesburg

South Africa

www.erm.com



ERM