

Institutional Arrangements and Processes for MRV for NAMAs

James Vener, PE
UNDP Bureau of Development Policy

PMR LAC Regional Workshop
6-8 March 2014, Mexico City



Federal Ministry for the
Environment, Nature Conservation
and Nuclear Safety



An Australian Government Initiative

Presentation Overview

- 1. UNDP's Low Emission Capacity Building (LECB) Programme**
2. Key Considerations for MRV Institutional Arrangements
3. Latin America and Caribbean Context

LECB Programme: Overview

- Low-carbon trajectories for development and sustainable mitigation actions in 25 partner countries
- 2011-16
- €32M (EC, BMU, Australia)
- Identify policy and financing options, mobilize the private sector, and implement on 5 *country-driven* work streams:
 - NAMAs, LEDS, MRV
 - GHG inventory systems, private sector mitigation
- Capacity building, technical backstopping, stakeholder outreach, ensuring cross-sectional CC policy integration

LECB Programme: Knowledge Sharing

Phase	Africa	Asia	LAC	Arab States	Europe/CIS
Phase 1	DRC	Philippines	Argentina	Egypt	
	Kenya	China	Chile	Morocco	
	Uganda		Colombia		
	Zambia		Ecuador		
			Mexico		
			Peru		
Phase 2	Ghana	Bhutan	Costa Rica	Lebanon	Moldova
	Tanzania	Indonesia	Trinidad & Tobago		
		Malaysia			
		Thailand			
		Vietnam			
Total #	6	7	8	3	1

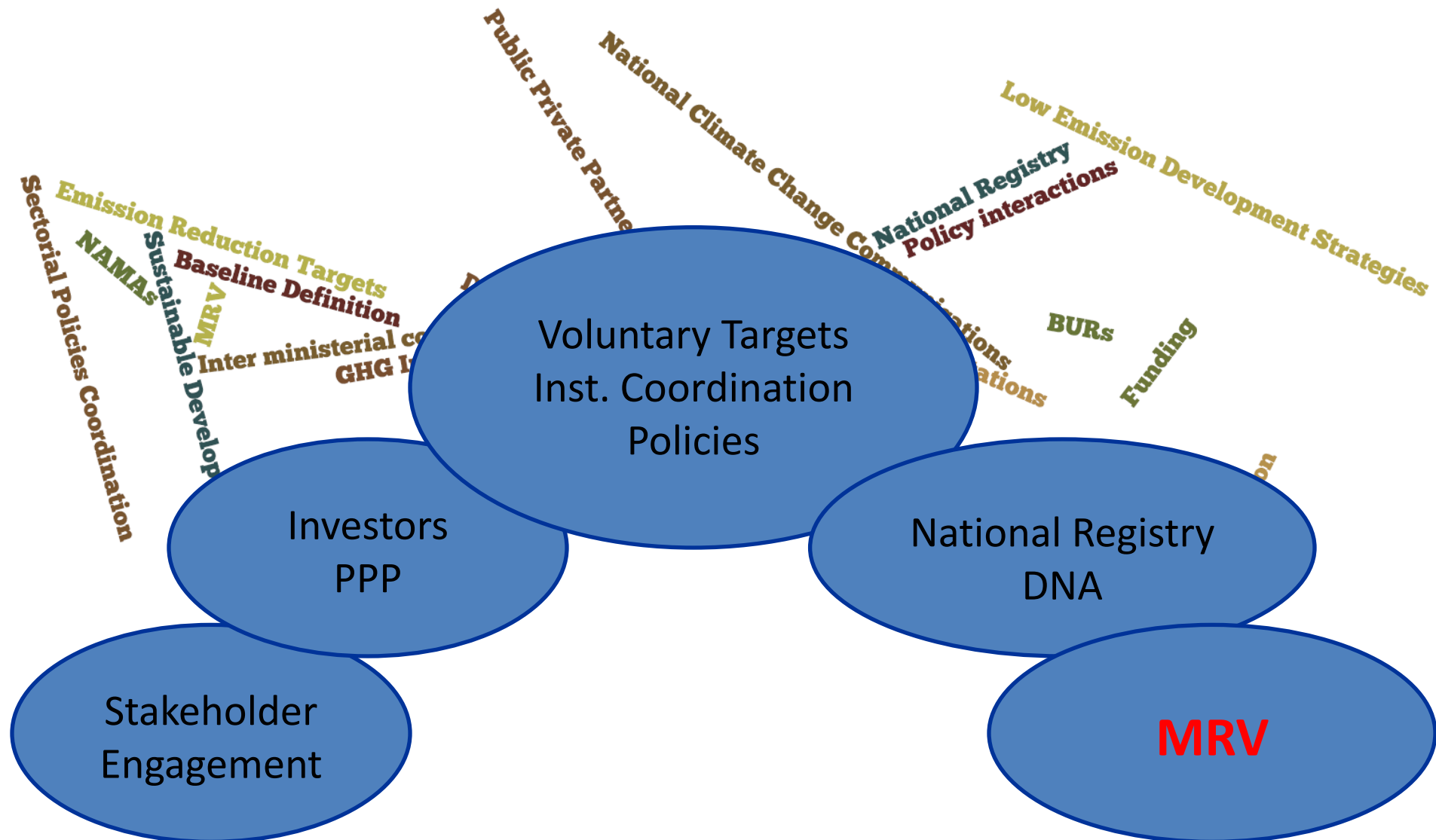
LECB and MRV

- MRV systems design for prioritized NAMAs and national systems for LEDS in 17 countries
- Address institutional, technical, and capacity gaps
- What is MRV'd? Who? How? When?
- MRV readiness testing:
 - data flow / infrastructure / governance
 - QA/QC, verification procedures
 - indicator selection, reporting schemes
 - recordkeeping, archiving

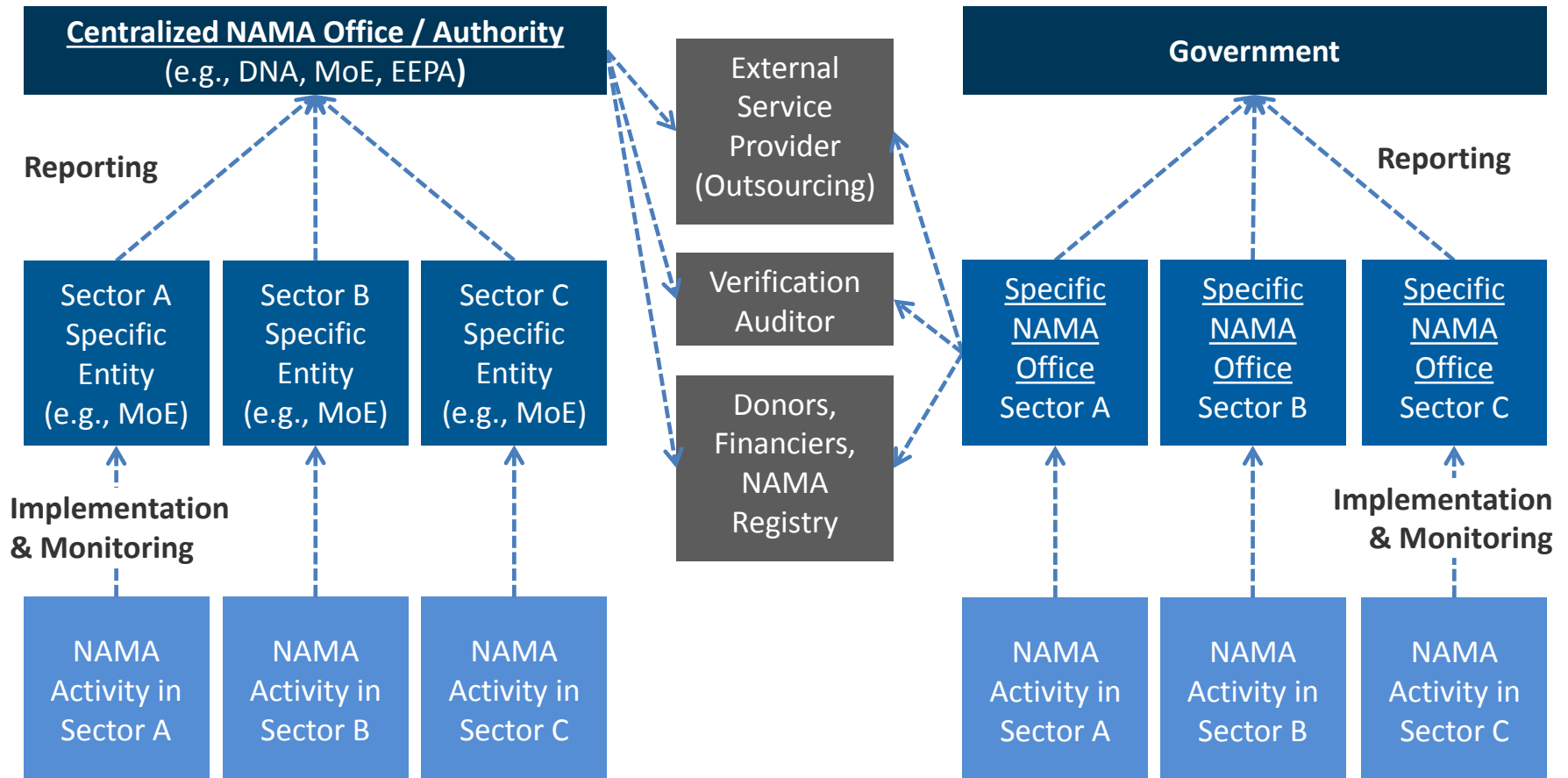
Presentation Overview

1. UNDP's Low Emission Capacity Building Programme
2. **Key Considerations for MRV Institutional Arrangements**
3. Latin America and Caribbean Context

... Other Pieces to the Puzzle to Consider for NAMA Design



NAMA Governance can be Centralized or Sector-Specific



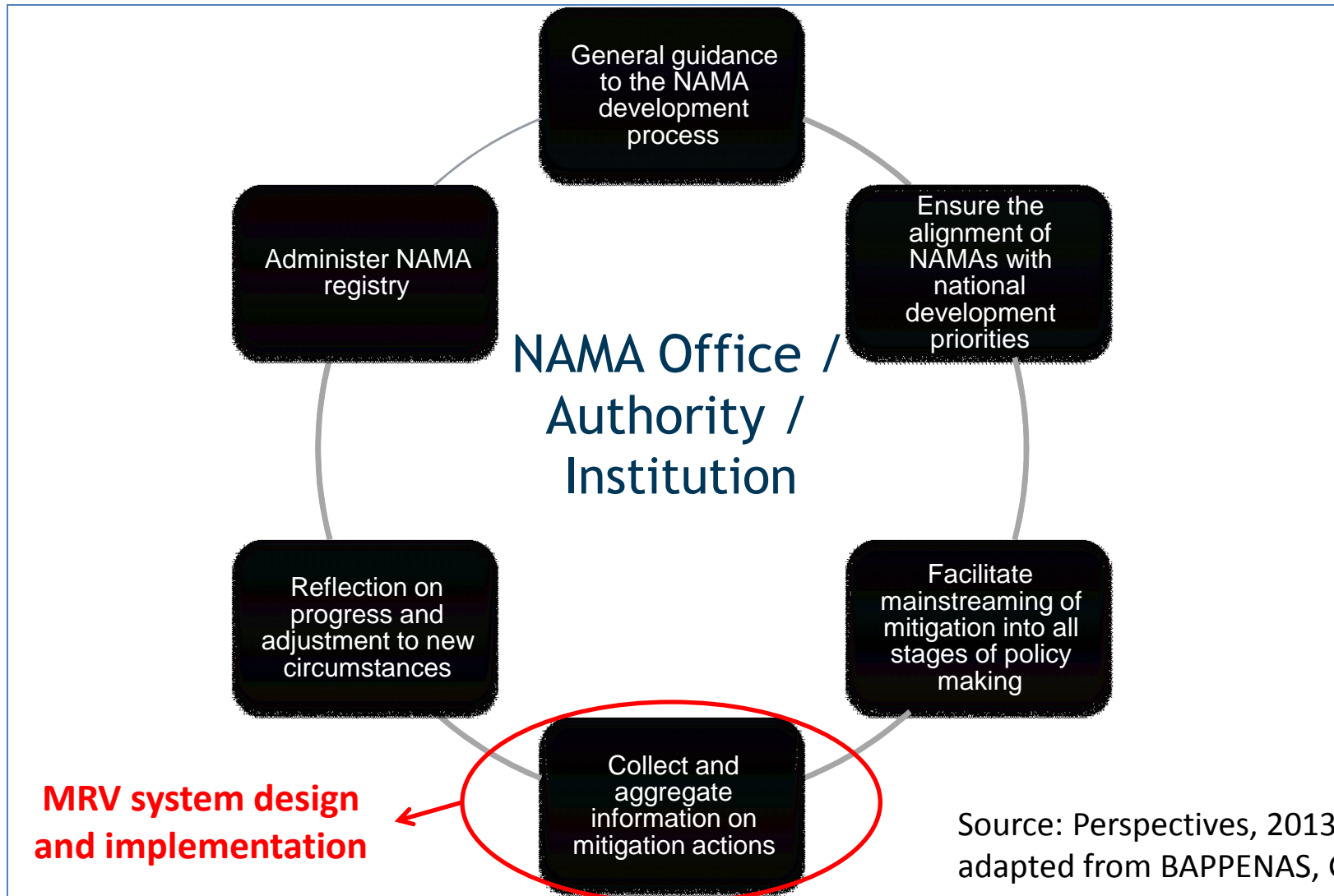
Key Institutional Factors related to MRV

- A tool for transparency and comparing NAMAs:
 - GHG emissions, NAMA impacts, flow of support
- Accountability for financial commitments, attract finance
- Open data access for investors and beneficiaries
- Sectoral participation / input from the start
- No UNFCCC methodologies on MRV
- Pre-existing guidelines:
 - IPCC inventory guidelines
 - NC, BUR, EUETS, and GHG Protocol Initiative corporate guidelines
 - Methodologies from CDM and Gold Standard

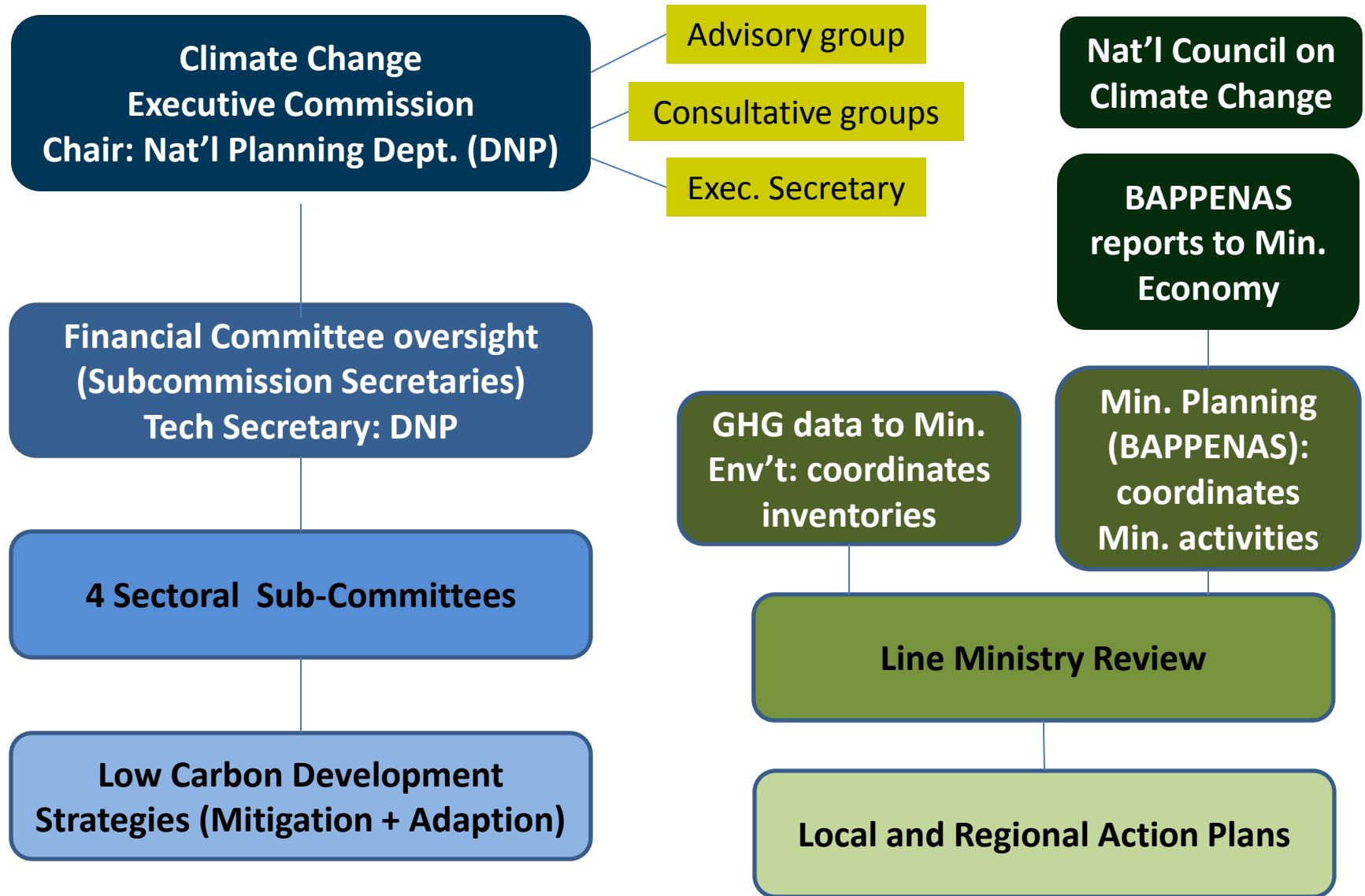
Institutional Arrangement System Design

- Build from existing foundations (DNA, GHG reporting)
- Establish a legal basis with clear roles and responsibilities
- Attract investment, buy-in, commercial interests:
 - Selection of MRV indicators (jobs, income, health)
 - Target priority sectors and ministries
- Simplify data collection not across sectors
- Minimize loss of institutional capacity / memory
- Ongoing self-improvement
- Central domestic coordinating entity
 - Inter-ministerial body / steering committee
 - Sectoral working groups, technical coordinator

General Tasks of a NAMA Office



Example: Colombia and Indonesia

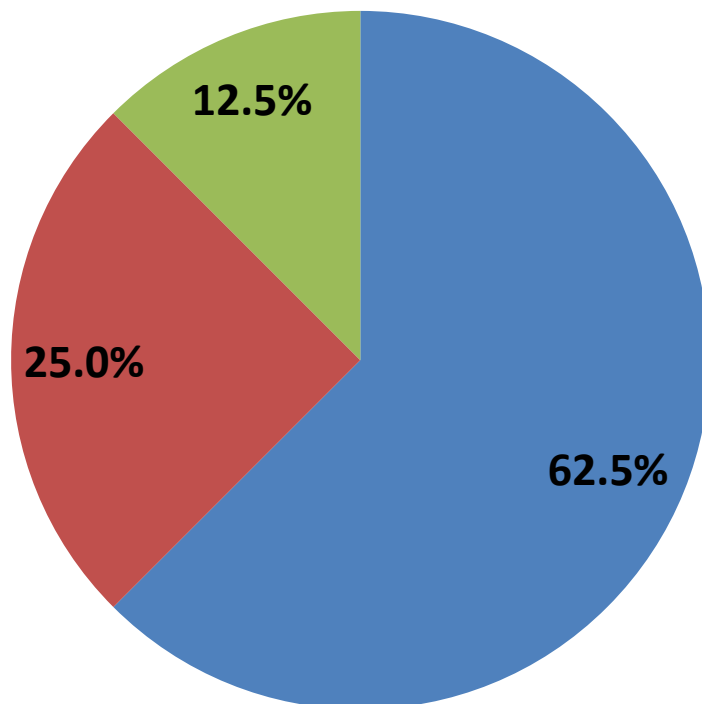


Presentation Overview

1. UNDP's Low Emission Capacity Building Programme
2. Key Considerations for MRV Institutional Arrangements
3. **LAC Region Context (LECB survey)**
 - **17 responses (52% response rate)**
 - **6 Caribbean, 11 Latin American**

Have Countries in LAC Identified a NAMA Focal Point? (n=16)

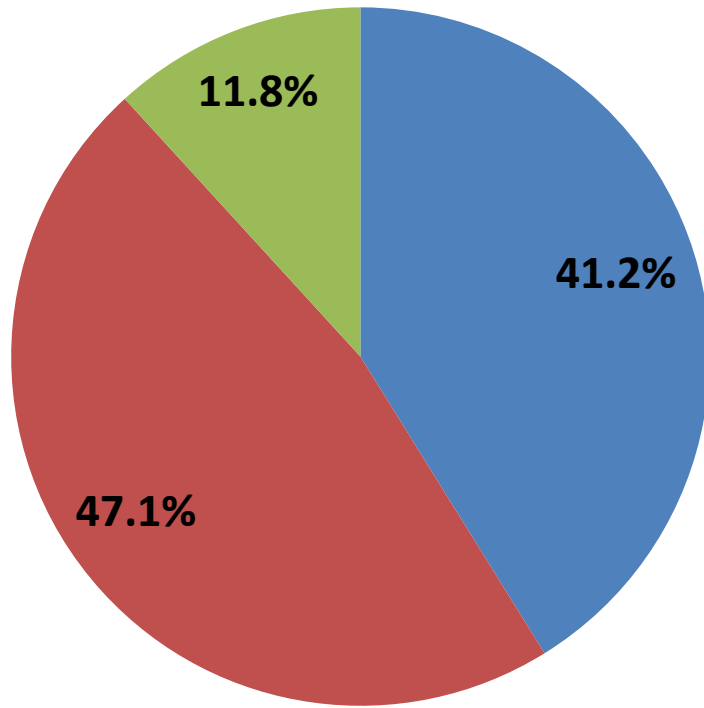
- Yes
- No
- In process of identifying



Ministry of Environment (or equivalent) hosts the NAMA focal point in majority of cases

Have Countries Established a National NAMA Committee? (n=17)

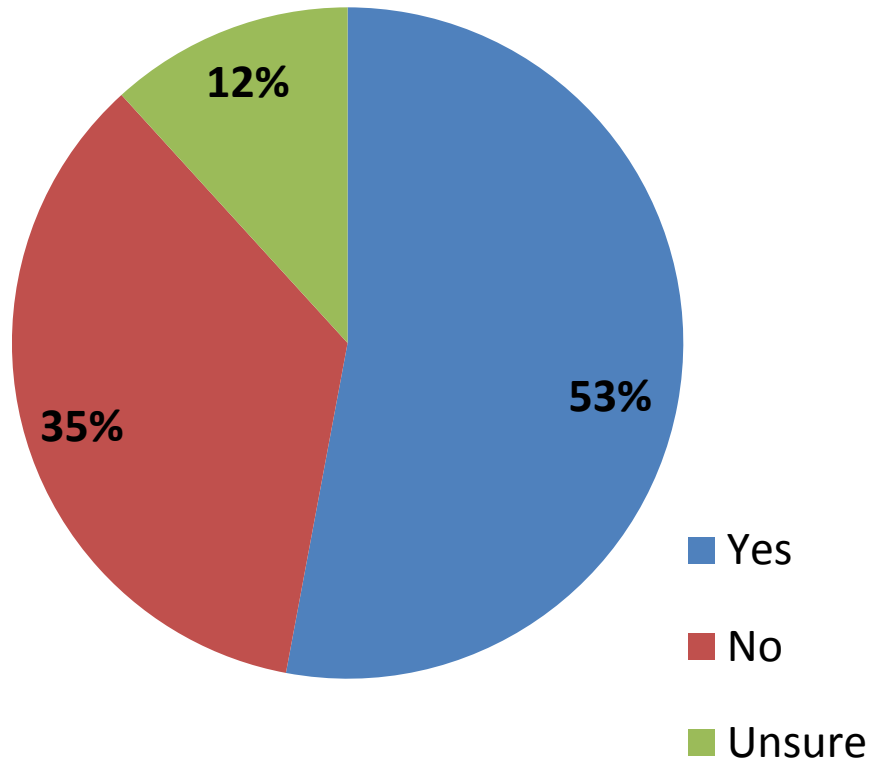
- Yes
- No
- In process of identifying



In majority of cases, countries are using existing national inter-ministerial committees on climate change (or mitigation).

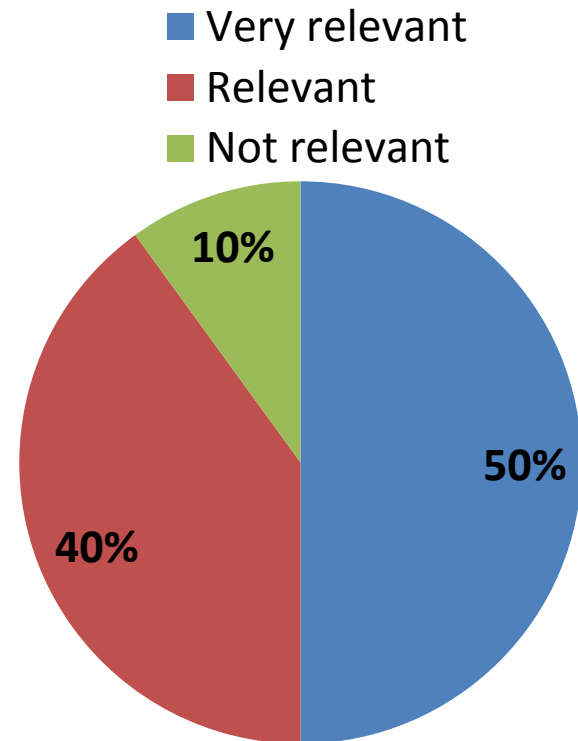
In some cases, private sector, academia, NGOs, and local government included in these committees

Is there a Successful Institutional Structure for Implementing CDM?



(n=17)

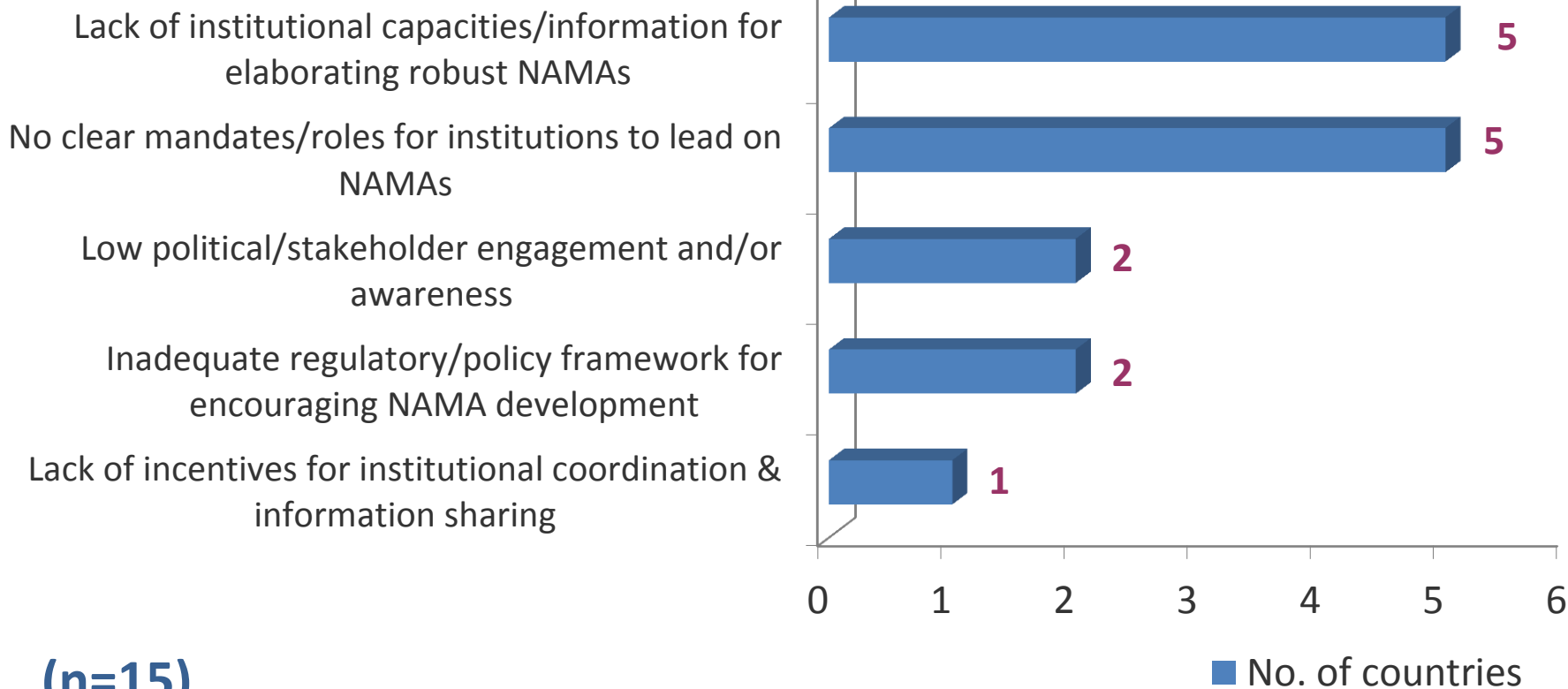
Can CDM structure be applied to NAMAs?



(n=10)

What is the Biggest Barrier for Establishing a Strong Institutional Framework for NAMAs?

Institutional barriers



Thank you!

James Vener, PE

UNDP Bureau for Development Policy
Environment & Energy Group

www.lowemissiondevelopment.org

james.vener@undp.org

+1-212-906-6028



Federal Ministry for the
Environment, Nature Conservation
and Nuclear Safety



An Australian Government Initiative