

# Experiences in Selecting INDC Reference Point: Challenges and Political Feasibility”

Kakhaberi Mdivani

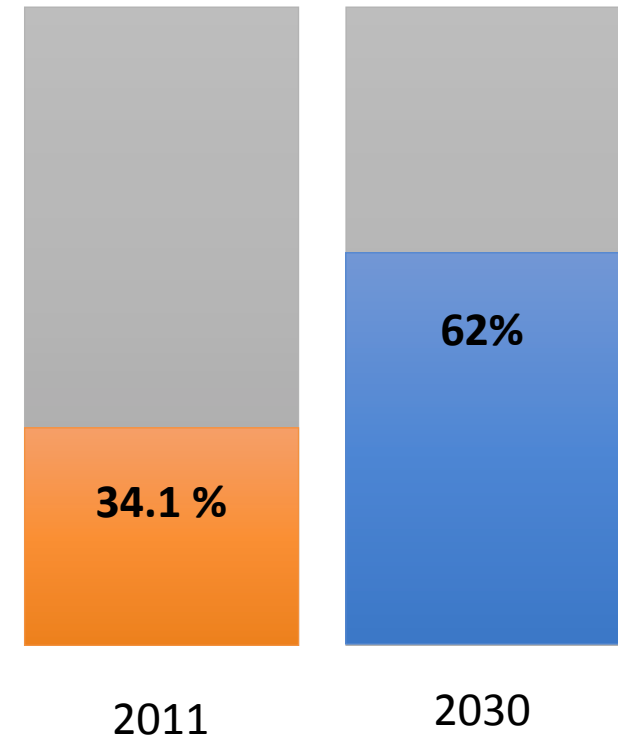
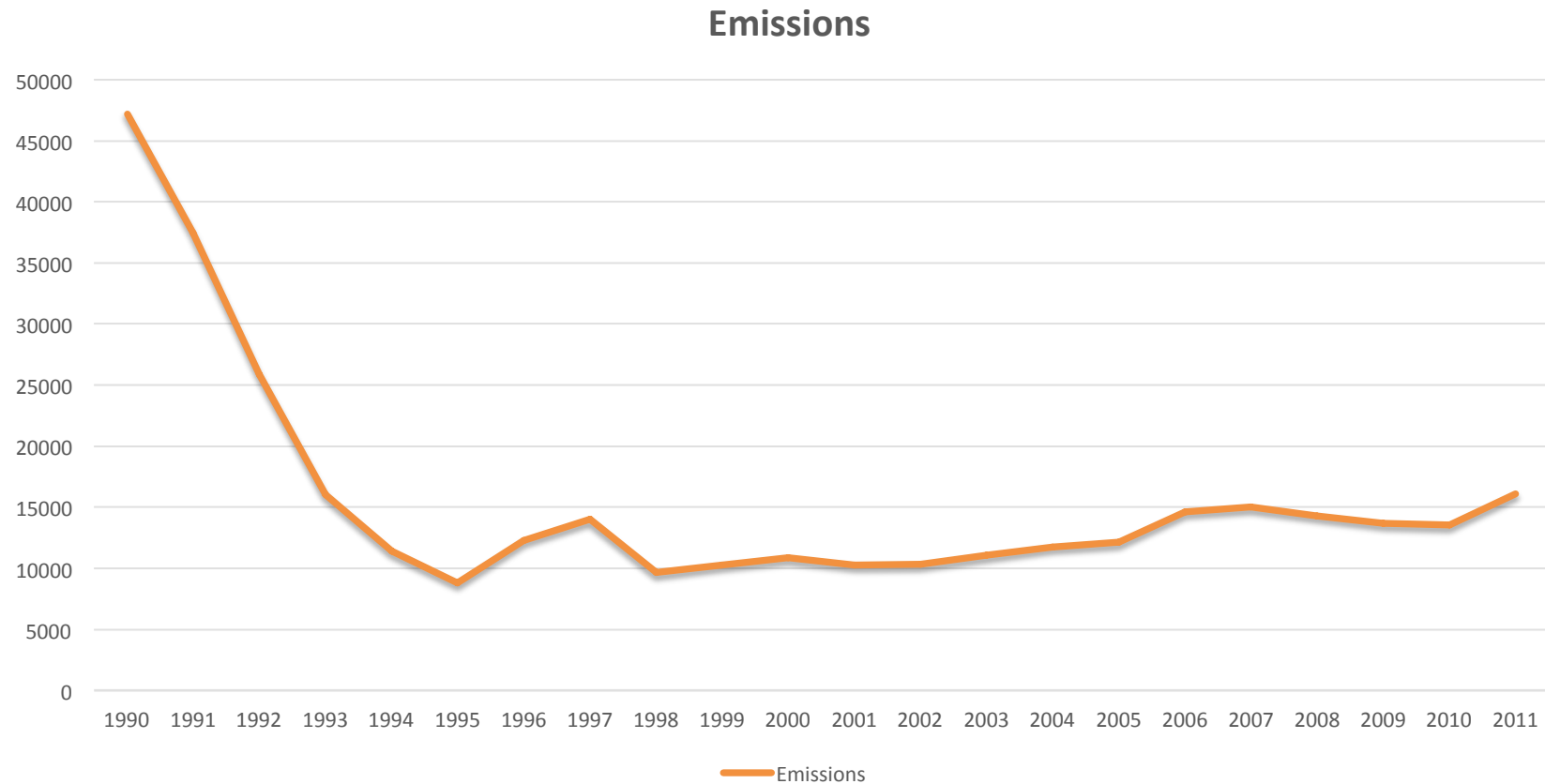
---

Global Workshop on Intended Nationally Determined Contributions (INDCs)

14-17 April 2015

Berlin, Germany

# Current Conditions



Source: *The third NC of Georgia*

# Main Pillars for determination of 2030 vision

• Energy Security

• Economic growth

• Poverty eradication

• Other requirements of SD

**Which reference point would address country's long term vision?**

# Base Year Target

## • Pros

- More accurate;
- More transparent;
- Convenient for MRV;
- Comparable data;
- Easy to combine with other types of target;
- Illustrate of fairness issues;

## • Cons

- BAU is required for determination of the mitigation goal;
- BAU is required to keep holistic vision on the country's development;
- Base year target needs to be lower than BAU;

# Baseline Target

- Step 1: Modeling the BAU scenario for 2030;
- Step 2: Developing Low Emission scenario;
- Pros
  - The BAU is developed under the LEDS process;
  - Flexibility;
  - The baseline target represented in a quantifiable manner can be combined with base year target;
  - Illustrate the level of ambitious
- Cons
  - High level of uncertainty: assumptions regarding Baseline, modeling tools used, etc.
  - Limited transparency;
  - Low comparability;

# Combination of the Targets

## • Pros

- Increase accuracy;
- Increase comparability (MRV, Data, & etc.);
- Targets in terms of conditional and unconditional commitments;
- Strengthen the statements on fairness and ambitious.

## • Cons

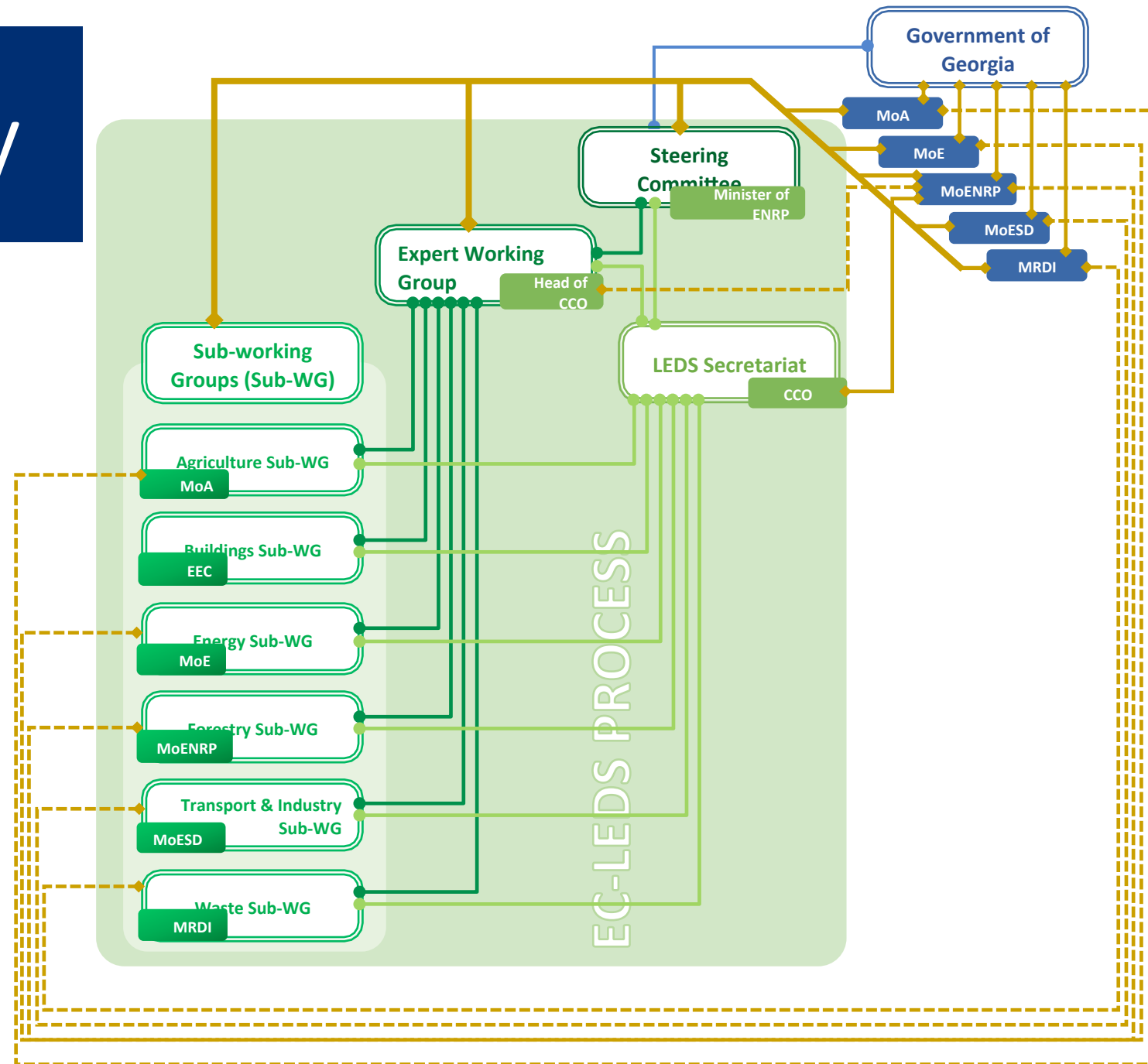
- Technical barriers are kept;
- Increase the number of stagegates during the process;
- Might be not relevant for the sectoral level.

# Political Feasibility

## Legends:

- Internal communication between EC-LEDS bodies
- Internal communication between EC-LEDS bodies and Secretariat
- ◆—◆ External communication between SWG chairs and Ministries
- ◆—◆ External communication between EC-LEDS bodies and Ministries

*Source: internal and external horizontal control coordination under LEDS, thesis KM, p. 80*



# Conclusions

- INDC Reference Point

- The instrument for illustration of mitigation goal;
- The instrument for identification of overall mitigation trends;
- The instrument for assessing the level of comparability, fairness, and ambitious.

- Political Feasibility of the process

- Authority vs. Mandate;
- Multi Stakeholder Platform;
- Determination of responsibilities based on focal area.



Thank You for Your Attention!