

Costa Rica: Experiences in Quantifying Expected Emissions Reductions

Pascal O. Girot
Ministry of Environment and Energy
UNDP Costa Rica
April 15 2015



Global Workshop on Intended Nationally Determined Contributions (INDC)
April 14-17, Berlin, Germany



Por encargo:
BMUB



Ministerio Federal
de Medio Ambiente, Protección de la Naturaleza
Obras Públicas y Seguridad Nuclear

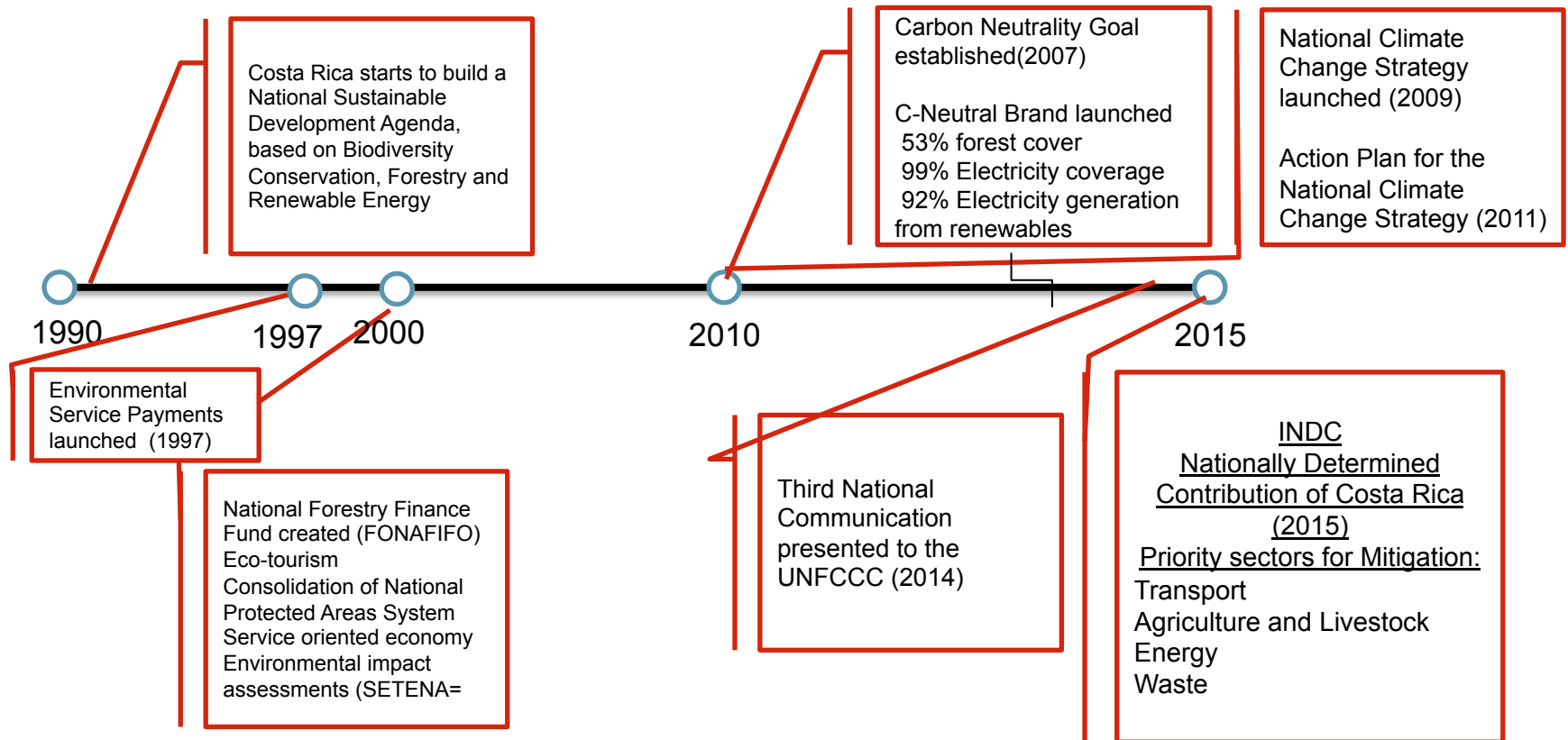
OUTLINE

- What have we done so far?
- How far have we gone?
- Sector-wide approach: NAMA Café
- Quantifying Expected Emissions Reductions
- Challenges and Opportunities



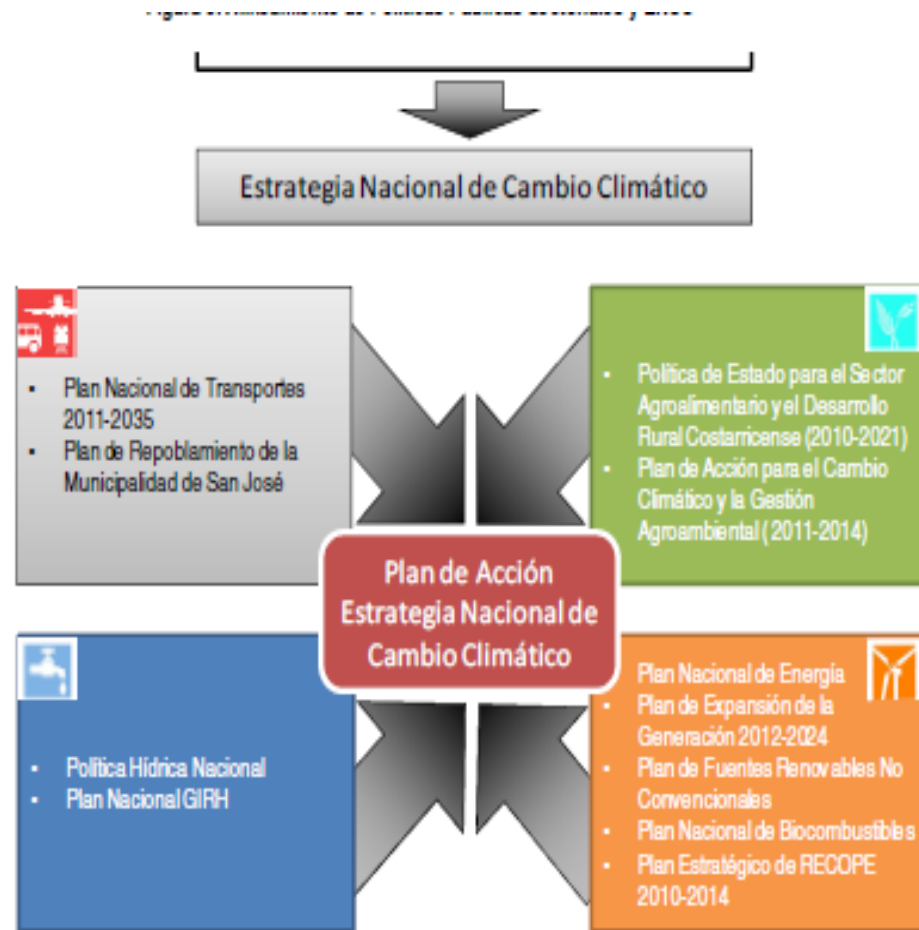
What have we done so far?

Key milestones in sustainable development policy in Costa Rica



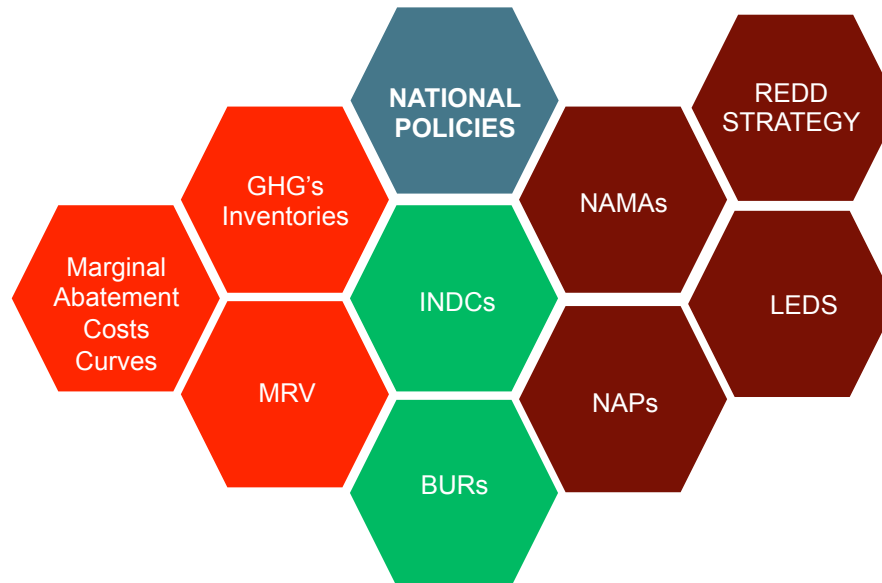
OVERALL OBJECTIVE OF THE NATIONAL CLIMATE CHANGE STRATEGY

- Reduce the social, environmental, and economic impacts of CC and take advantage of opportunities, promoting sustainable development through economic growth, social progress and environmental protection through mitigation efforts and adaptation actions that improves the quality of life of Costa Rica's inhabitants and their ecosystems, to move towards a low carbon and competitive economy by the year 2021. This shared responsibility should be given through the development of skills and legitimacy to influence both the National Agenda and the International Agenda





How to organize the current climate policy arena?





How far have we gone?

How far have we gone

- National Climate Change Strategy
- National Development Plan 2014-2018 (Climate Change fully integrated, mentioned 53 times)
- Country Programme on Carbon Neutrality
- C-Neutral Brand
- NAMAs (Coffee, Livestock, Urban Transport)
- INDCs Process

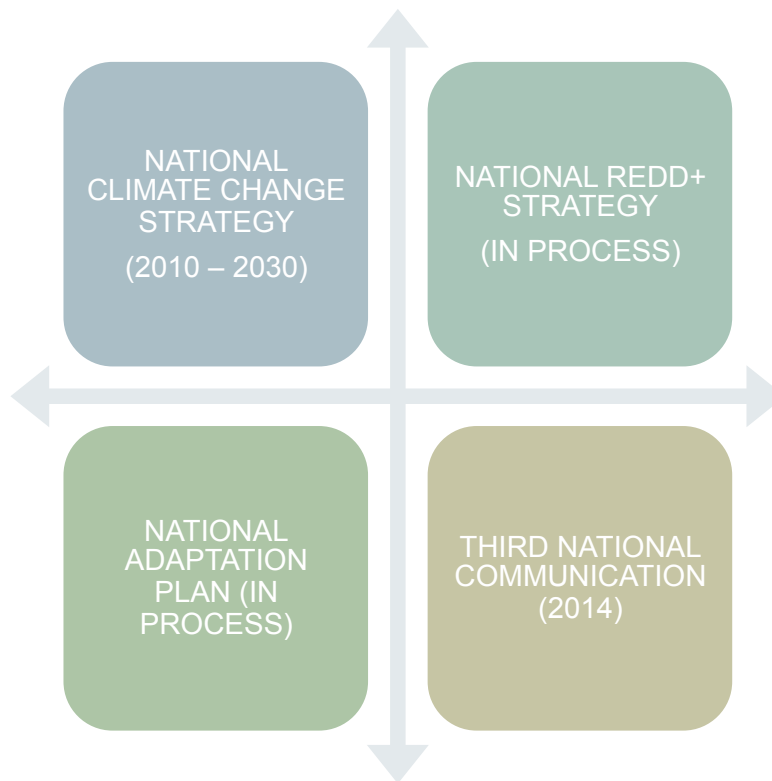


**CARBONO
NEUTRAL**

Reconocido por el Gobierno de Costa Rica



NATIONAL STRATEGIES AND PLANS

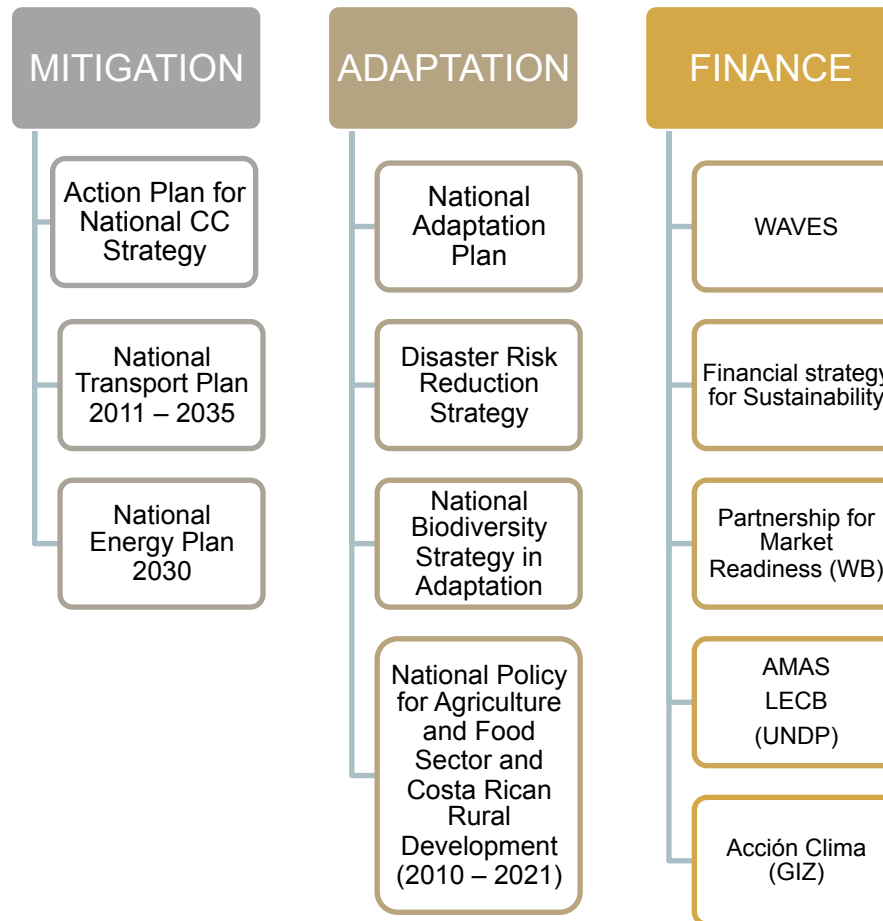




NATIONAL READINESS PLANNING

Mitigation	Adaptation	Finance	Economic Instruments	Transparency and Reporting	
NAMA Café	Programa Bandera Azul Ecológica (componente A)	Consolidación del Fondo Nacional de Cambio Climático	Mercado Doméstico de Carbono	MRV de NAMAs, PSA y posibles “Servicios de Adaptación Nacional”.	
NAMA Ganadería					
NAMA Energía/ Biomasa	Programas de Gestión Ambiental Institucional (PGAIs) (componente A)		UCCs	Marca C-Neutral	
Programa Bandera Azul Ecológica (componente M)			Canon de carbono industrial (proceso)		Trazabilidad de UCCs
Programas de Gestión Ambiental Institucional (PGAIs) (componente M)			Impuestos de combustibles & expansión de PSA		
Expansión de PSA			Participación en MDL		

SECTORIAL PLANS AND POLICIES

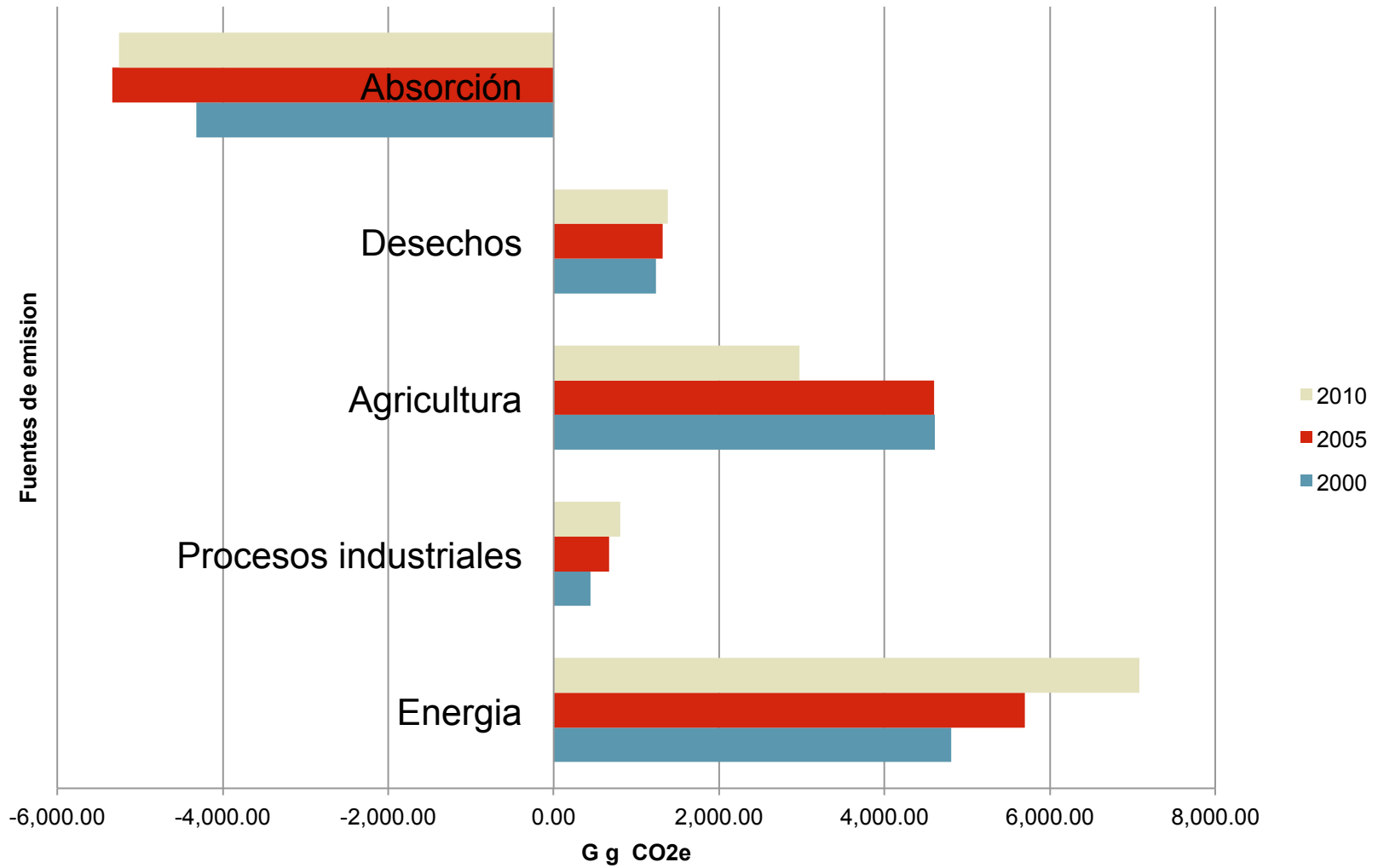




NATIONAL AND INTERNATIONAL FINANCIAL INSTRUMENTS

Instruments/ Focal points	Mitigation	Adaptation	Finance
Multilateral and bilateral donors	NAMA Facility IDB/FOMIN PMR/ World Bank GIZ	Adaptation Fund	World Bank, IADB KfW Central American Bank for Economic Integration (CABEI)
National Resources	FONAFIFO CC National Fund	FONAFIFO CC National Fund	National Banking System Tariffs and fees (ie Environmental Services Payment)

Resumen de inventarios Costa Rica 2000 al 2010



Per capita CO₂ emissions



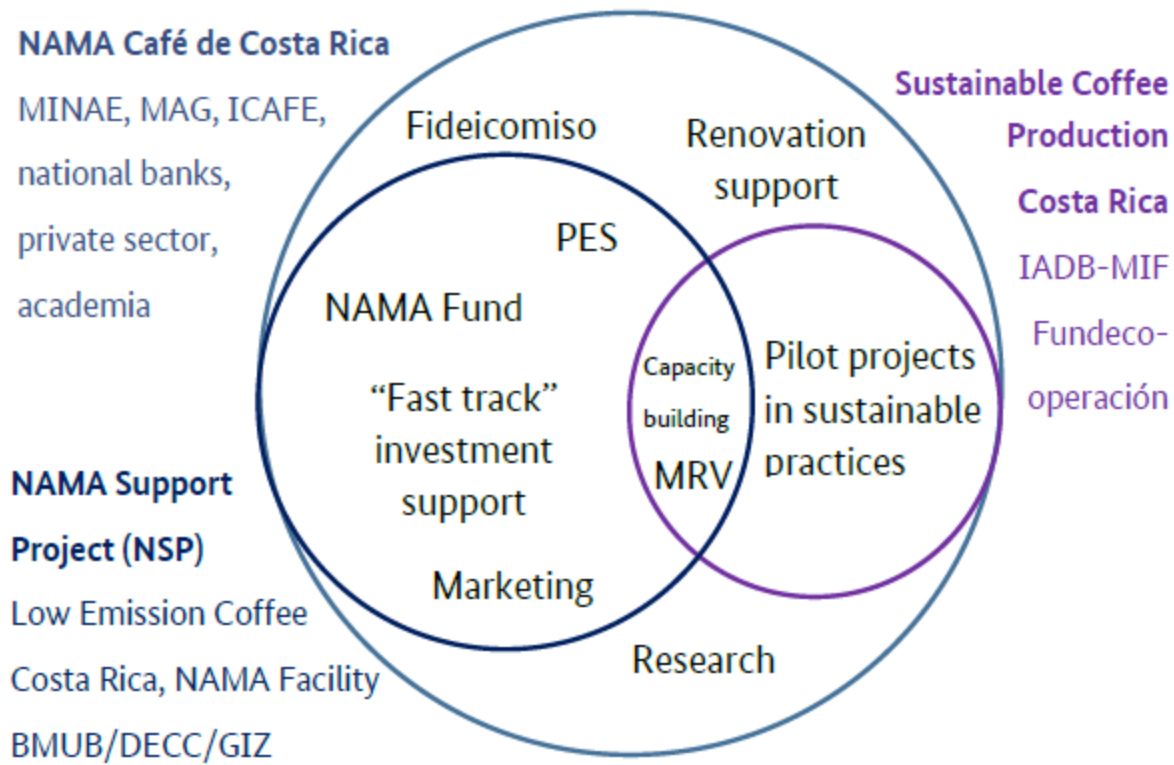


Sector-wide approach: NAMA Café

Sector-wide approach: NAMA Café

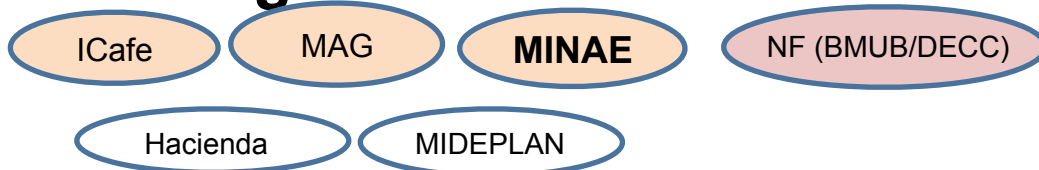
Country :	Costa Rica
Project:	NAMA Facility Support to Costa Rica's Coffee Sector for Reduced Emissions
Implemented :	Ministry of the Environment and Energy, Ministry of Agriculture
Key Areas:	Mitigation, adaptation in agriculture, energy efficiency, Training and development of a low-emissions agricultural development model
Donors:	Germany's Federal Ministry for Environment, Public Works and Nuclear Security (BMUB), through the German Technical Cooperation (GIZ) y United Kingdom Department of Energy and Climate Change (DECC)
Direct Beneficiaries :	6 000 Small and Medium Producers, 50 Coffee Processing Plants in 25,0000 Ha.
Estimated emissions Reduction:	120,000 Tcoe (under revision)
Key Stakeholders:	ICAFE, coffee cooperatives, Ministry of Agriculture and livestock, FUNDECOOPERACION
Budget:	US\$ 9,3 Million (€ 7 M) divided into two major components (technical and financial) and five sub-components. Leveraging 1:3
Timeframe:	4 years

Inter-relations...



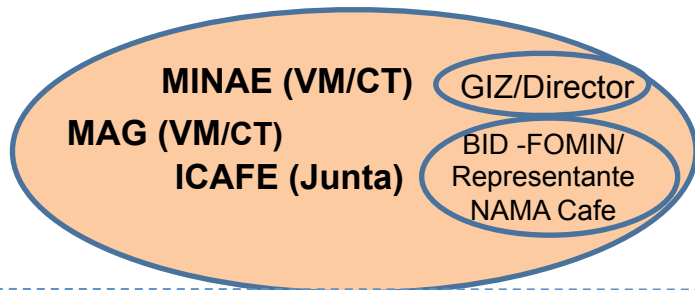
Governance Arrangements

Policy Oversight

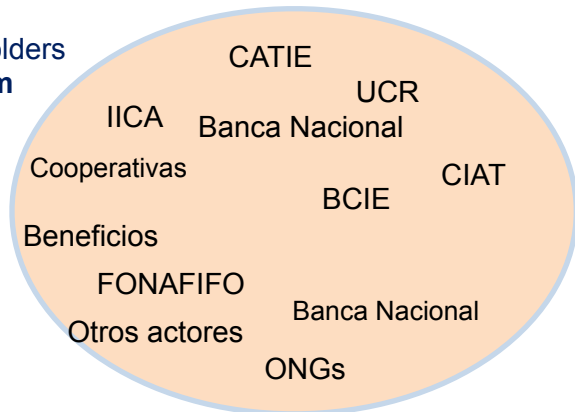


Institutional Support

Steering Committee



Stakeholders Platform



Project Management Unit



GT's/Outputs



External Consultancy (national and international)

Roles & Functions

Policy Oversight:
MAG, MINAE

Policy dialogue: NF Board

Inter-ministerial Coordination

Technical committee

1. MAG, MINAE, ICAFE: implementation and technical coordination
2. BID/FOMIN, GIZ: strategic technical advice (MOU)
3. Other partners: strategic advice

4. Technical secretariat: Project Management Unit (PMU) support project NAMA-Facility (MAG/Gerente Café, MINAE/DCC, ICAFE/Gerente, GIZ, Director)

5. NAMA-Café Stakeholder platform:

- Overall coordination of activities (Fundecooperación)
- Knowledge management
- Working groups,
- Technical Advice
- Training, events

Consultancies:

- By products /services
- Local Subsidies
- Financing contracts
- Public-Private Partnership



Quantifying Expected Emissions Reductions

INDC Planning

Key Actions

Stakeholder Participation

- Involvement of key stakeholder groups at different stages

Information and INDC design

- GHG Inventory, BURs, Emissions Scenarios (MAC curves)
- National Climate Change Strategy
- INDCs and MRV architecture
- National Information Registry (SINAMECC)

Governance Structure and Finance

- Governance arrangements, MRV, systems, financial architecture

INDC timeline and milestones

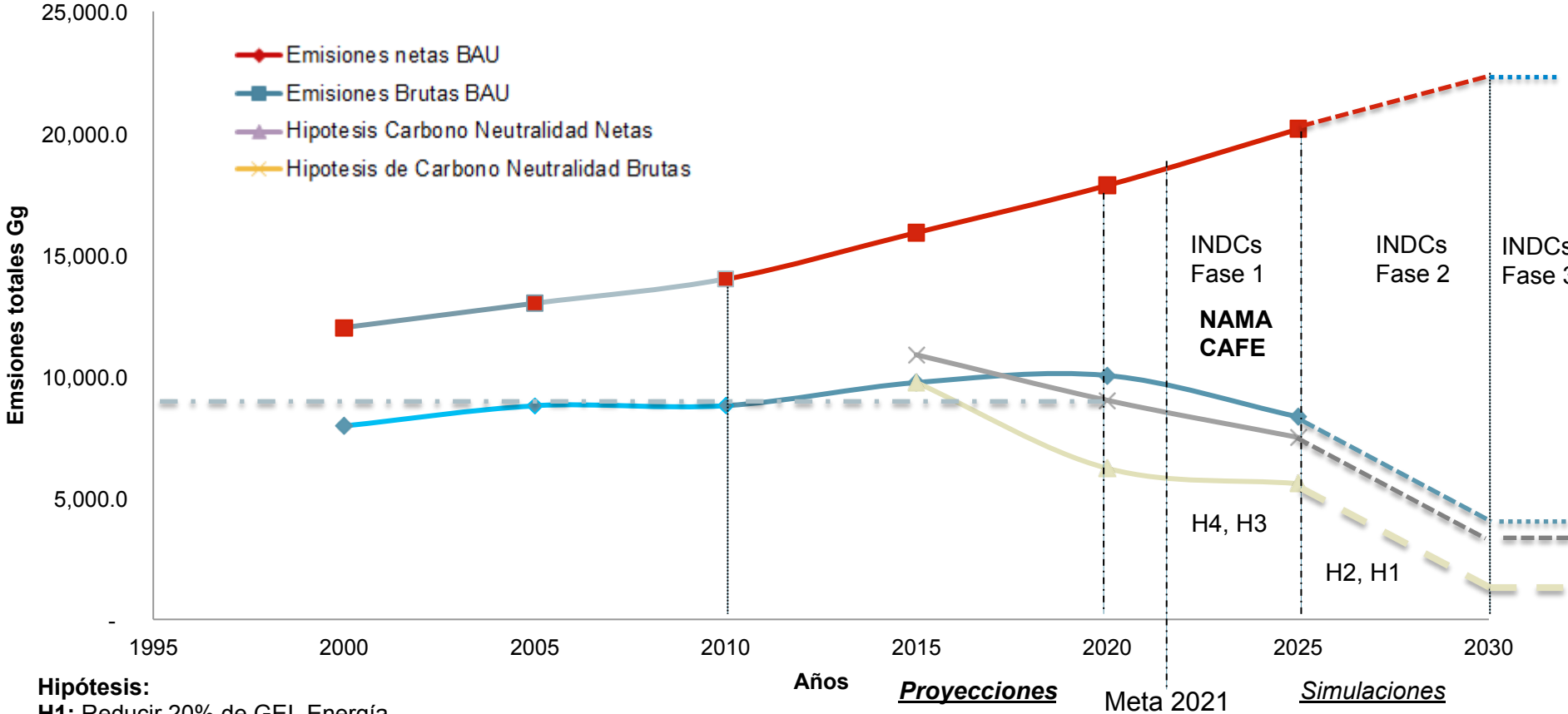


Proyecciones por establecer

<u>Meta</u>	<u>Meta</u>	<u>Meta</u>	<u>Meta</u>	<u>Meta</u>	<u>Meta</u>
Definidos:	Lograda la	Lograda la	Establecimiento	Lograda la	Lograda la
NAMAs +	carbono	carbono	de metas	carbono	carbono
INDCs	neutralidad en :	neutralidad en :	sectoriales de	neutralidad en :	neutralidad en :
	<ul style="list-style-type: none"> Energía 	<ul style="list-style-type: none"> Desechos 	reducción de	<ul style="list-style-type: none"> Desechos 	<ul style="list-style-type: none"> Energía
	parcial	parcial (aguas	emisiones y	parcial	parcial (Sector
	(electricidad)	residuales)	mantenimiento	(residuos	transporte)
	<ul style="list-style-type: none"> Agricultura, Silvicultura y otros usos de la tierra 	<ul style="list-style-type: none"> Procesos Industriales 	de meta	sólidos y	<ul style="list-style-type: none"> Procesos Industriales
				rellenos	
				sanitarios)	

Aproximaciones, escenarios y simulaciones... (on revision)

Emisiones GEI 2000 hasta 2030 (simulación)

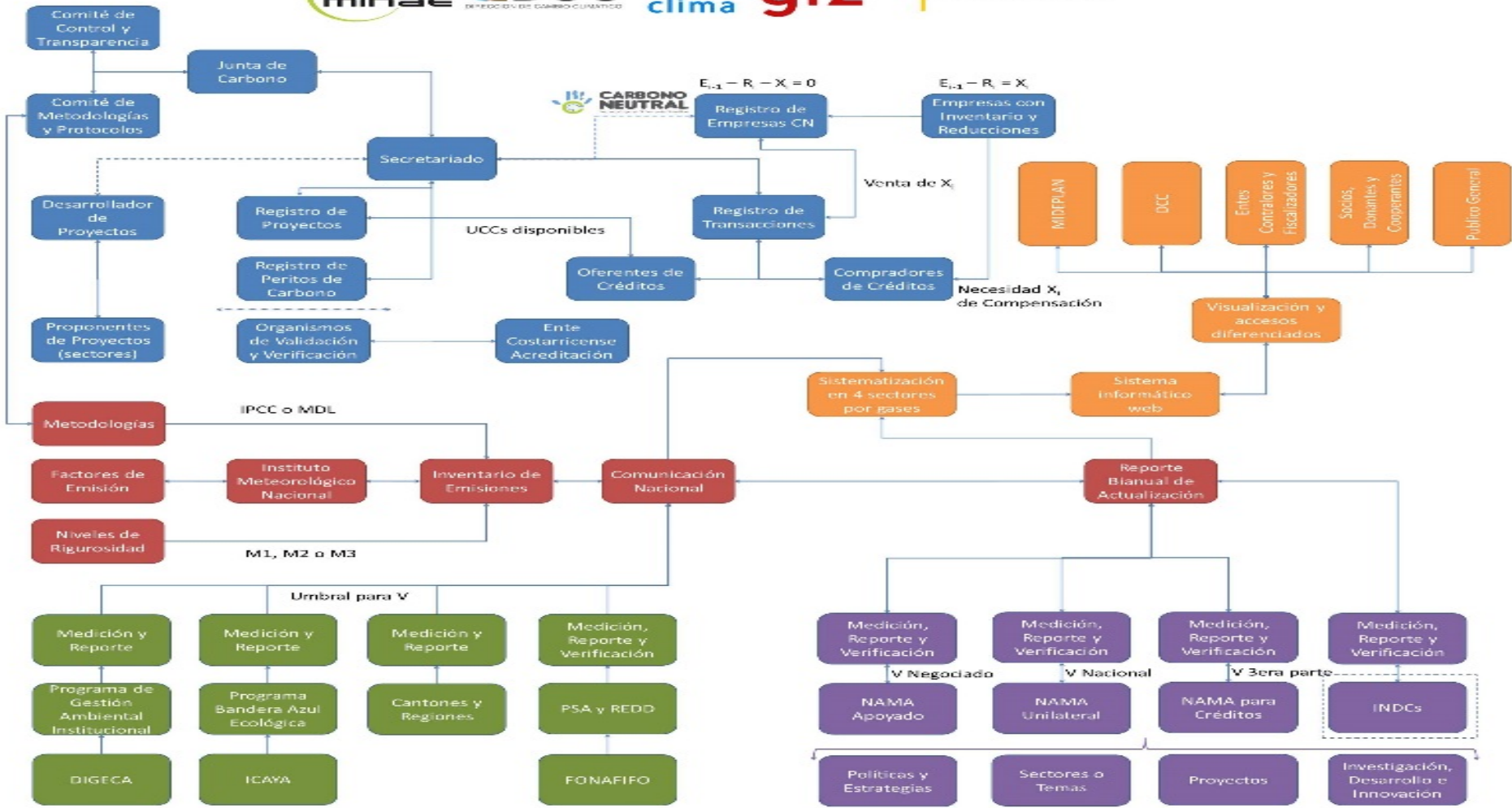


- Hipótesis:**
- H1:** Reducir 20% de GEI Energía
 - H2:** Reducir 16% de GEI Procesos industriales
 - H3:** Reducir 6% de GEI Desechos
 - H4:** Crecer hasta un 60% en cobertura forestal

Fuente: Jiménez GIZ, 2015 con datos de IMN 2014.

SINAMECC: NATIONAL INFORMATION REGISTRY

Sistema Nacional de Métrica de Cambio Climático





Challenges and opportunities

Key Challenges and Opportunities

- Fully Developing National Registry **SINAMECC**
- Implementation of NAMAs (i.e NAMA Café, Ganadería)
- Coordination of Support for INDC (proposals, workshops, technical assistance, financial) (PMR-WB, GIZ, UNDP)
- Synergies between INDC and NAP processes
- Developing common accounting and guidance (Regional Programme Support for Common Accounting Rules-GIZ-).
- South-South Cooperación (Goals for admissions into OECD)
- Research and Development- for improving on metrics
- Financial Architecture (fiscal resources, loans, grants)



Por encargo:
BMUB



Ministerio Federal
de Medio Ambiente, Protección de la Naturaleza
Obras Públicas y Seguridad Nuclear

Thank you...

Pascal O. Girot

Ministerio de Ambiente y Energía- Costa Rica-

Centro de Cambio Climático

Boulevard Barrio Dent, esquina calle Ronda

Tel:+506.25.28.54.20

San José, Costa Rica

*“Special thanks to William Alpízar, MINAE-DCC,
Gustavo Jimenez, Programa ACCION CLIMA-GIZ“*