

ADAPTATION

GGA outcome from Belem

Tugba Icmeli, Transparency Division, UNFCCC
CGEsupport@unfccc.int; ETFsupport@unfccc.int



United Nations
Climate Change Secretariat

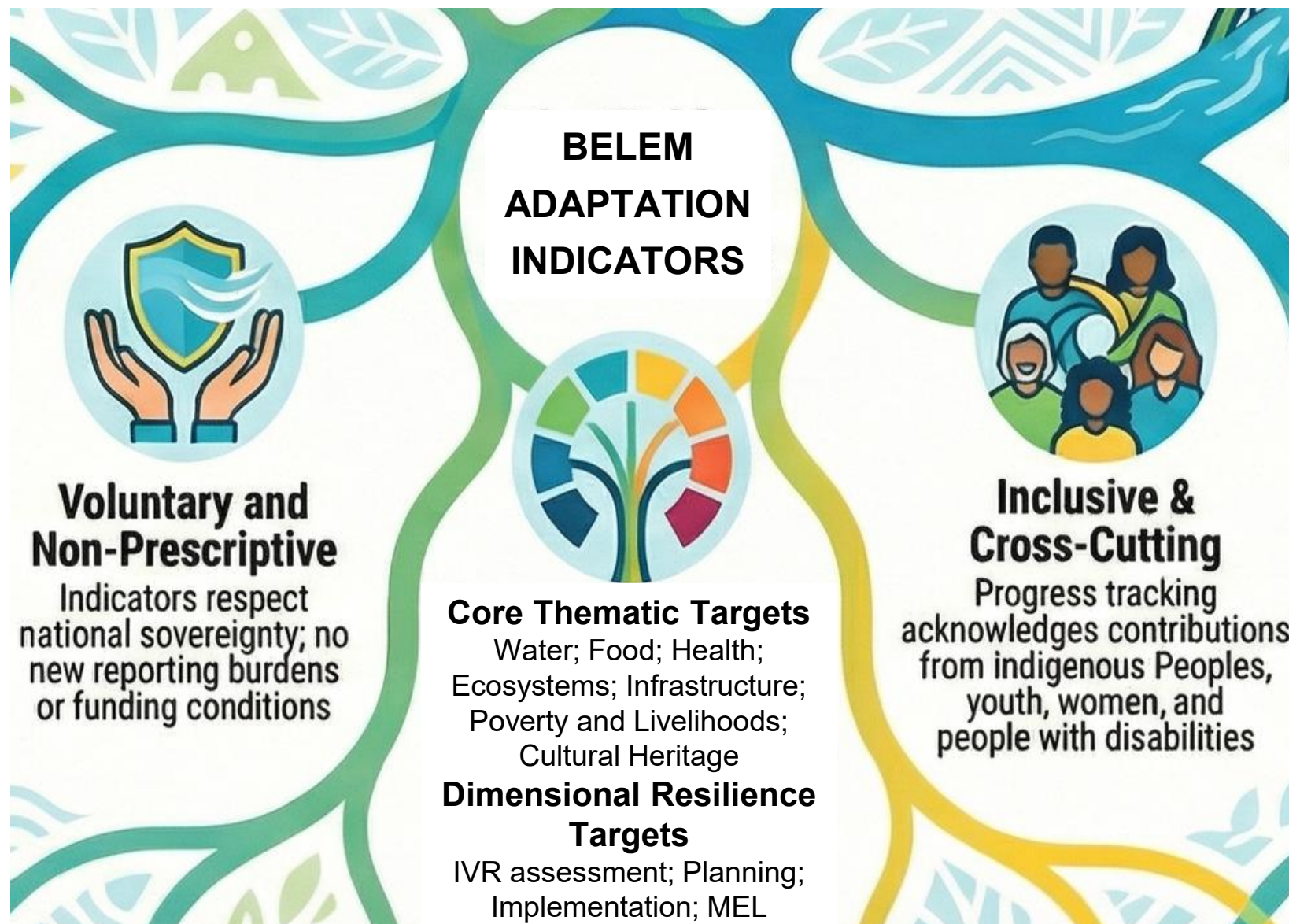


2023, 2/CMA.5, UAE/Dubai:

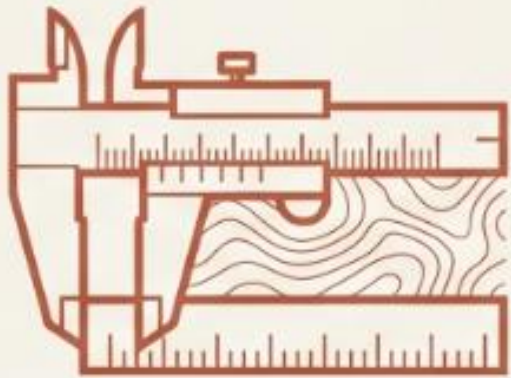
- ✓ Parties adopted the **UAE Framework for Global Climate Resilience**, marking a major milestone for adaptation under the Paris Agreement
- ✓ A global plan to help countries become more resilient to climate change

2025, CMA 7, Brazil/Belem:

- ✓ Parties adopted the **59 Belém Adaptation Indicators**
- ✓ Parties are invited to integrate and make use of these targets in their reporting and planning processes
- ✓ <https://unfccc.int/documents/655022>

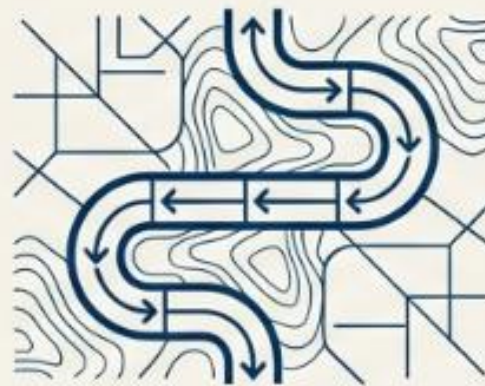


1. THE METRICS



Core Action: Adoption of the ‘Belém Adaptation Indicators’.
A finalized list of indicators for measuring progress on the Global Goal on Adaptation (GGA) targets defined in Decision 2/CMA.5.

2. THE PROCESS



Core Action: Launch of the ‘Baku Adaptation Road Map’ (2026–2028). A dedicated workstream to operationalize indicators via two workshops per year and technical paper development.

3. THE VISION



Core Action: Establishment of the ‘Belém–Addis Vision on Adaptation’. A two-year policy alignment process to develop guidance for using the indicators, managed jointly by subsidiary bodies.

The Support Ecosystem: Finance & Technical Assistance

Adaptation Committee (AC), LEG, CGE



- Technical guidance and support for implementing UAE Framework.
- Guidance on integrating UAE framework into NAPs.

UNFCCC Secretariat



- Technical paper on use of the indicators; mapping existing processes; identify synergies, gaps and ways to fill the gaps; analyse guidelines, tools and methodologies

Global Environment Facility (GEF)



- Support implementation, including through CBIT.

National Implementation

Green Climate Fund (GCF)



- Support implementation.
- Ensure alignment of Framework with NAPs and MEL systems.

Adaptation Fund

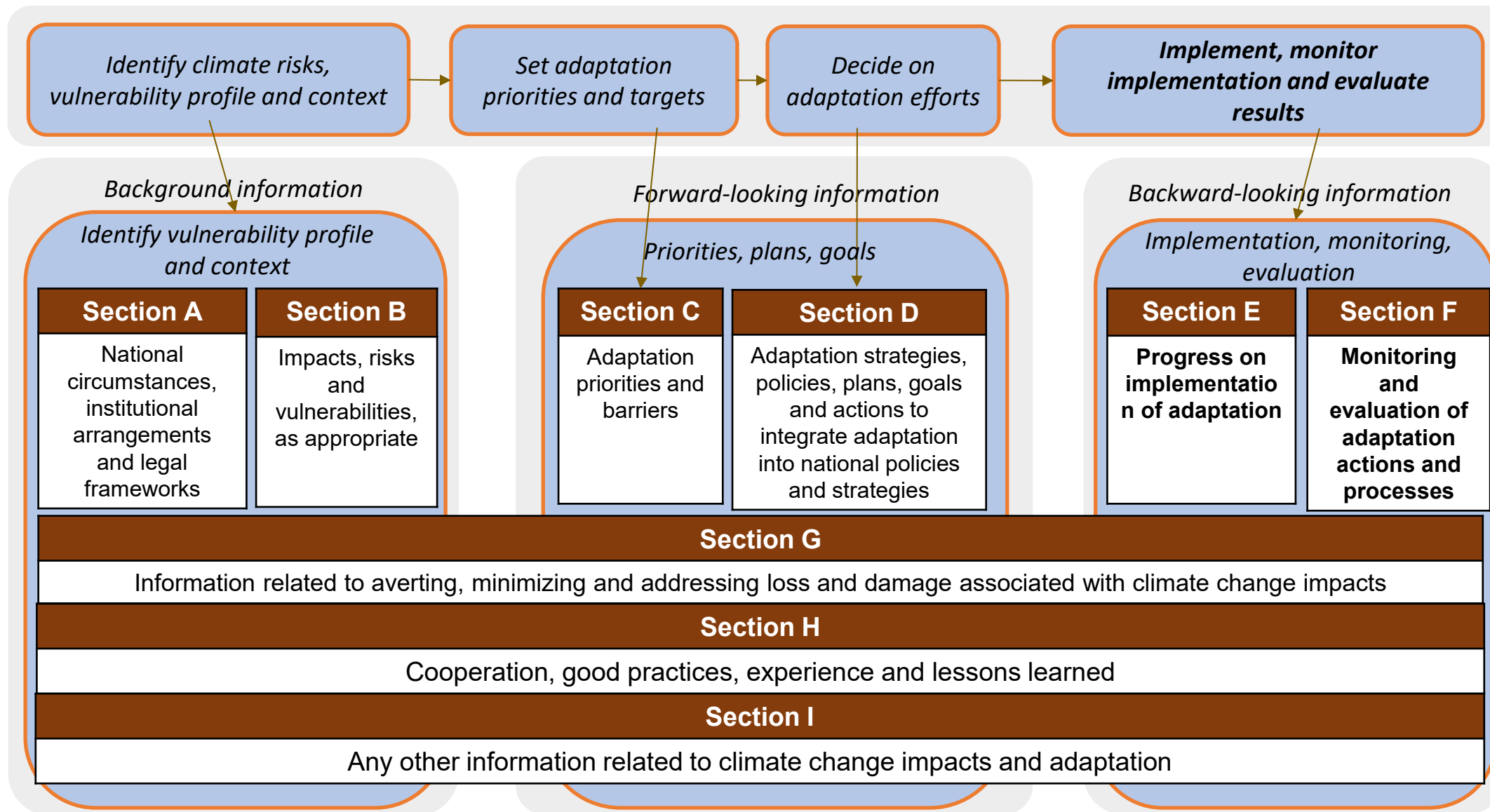


- Support implementation.
 - Ensure alignment of Framework with NAPs and MEL systems.

The Strategic Horizon:



How to make use of Belem Adaptation Indicators in BTRs?



Thank you

Questions and reflections?



United Nations
Climate Change Secretariat



Group discussion with guiding questions: 25 min
Joint reflection in plenary: 20 min

Guiding questions:

1. Why is the reporting on climate change impacts and adaptation important for your country? **[GREEN]**
2. Which key indicators are you planning to use to track progress in adaptation? **[PINK]**
3. Considering the main challenges and lessons learned relating to the reporting on adaptation in BTR1, what could be done differently in the BTR2? **[ORANGE]**

