



NDC Progress indicators

Cristina Urrutia

Supported by:



Federal Ministry
for Economic Affairs
and Climate Action

Federal Foreign Office



INTERNATIONAL
CLIMATE
INITIATIVE



Ministry of Environment

Greenhouse Gas Inventory
and Research Center



forestry, fisheries
& the environment

Department:
Forestry, Fisheries and the Environment
REPUBLIC OF SOUTH AFRICA



Types of NDC targets

GHG-related	Non-GHG related
Absolute emission reduction or limitation target relative to a base year	Sectoral non-greenhouse gas targets (e.g. energy efficiency, forest cover)
Emission reduction target below a BAU level	Mitigation actions (e.g. shifting to public transport)
Fixed-level target	
Trajectory target	
Intensity target	

Supported by:



Federal Ministry
for Economic Affairs
and Climate Action

Federal Foreign Office



INTERNATIONAL
CLIMATE
INITIATIVE



Ministry of Environment

Greenhouse Gas Inventory
and Research Center



forestry, fisheries
& the environment

Department:
Forestry, Fisheries and the Environment
REPUBLIC OF SOUTH AFRICA



Why indicators?

65. Each Party **shall** identify the **indicator(s)** that it has **selected to track progress** towards the **implementation and achievement** of its NDC under Article 4. Indicators **shall be relevant** to a Party's NDC under Article 4, and may be either qualitative or quantitative.

In using indicators, the ETF accomodates the diversity of NDCs

Supported by:



Federal Ministry
for Economic Affairs
and Climate Action

Federal Foreign Office



INTERNATIONAL
CLIMATE
INITIATIVE



Ministry of Environment

Greenhouse Gas Inventory
and Research Center



forestry, fisheries
& the environment

Department:
Forestry, Fisheries and the Environment
REPUBLIC OF SOUTH AFRICA



Reporting on indicators in Biennial Transparency Reports - Mitigation

The following information shall be reported in 'common tabular formats' (CTF):

- Description of selected indicators
- Definitions needed to understand each indicator
- Methodology or accounting approach used to generate the information for each indicator
- Indicator values in the base year and in each year of the NDC period
- Projections of key indicators

Supported by:



Federal Ministry
for Economic Affairs
and Climate Action

Federal Foreign Office



INTERNATIONAL
CLIMATE
INITIATIVE



Ministry of Environment
Greenhouse Gas Inventory
and Research Center

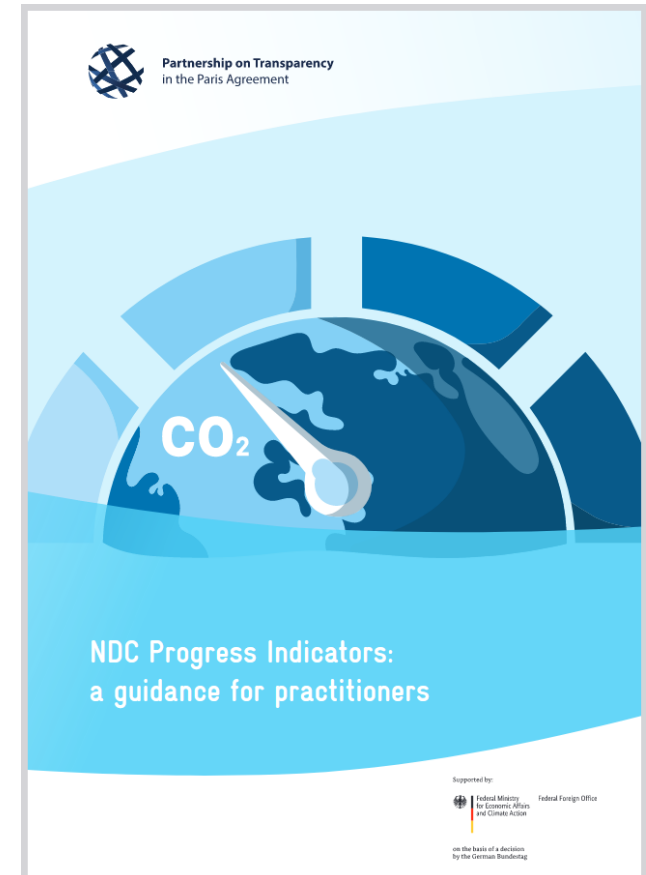


forestry, fisheries
& the environment
Department:
Forestry, Fisheries and the Environment
REPUBLIC OF SOUTH AFRICA



Knowledge product

- What to expect?
 - Background information
 - Practical examples



Supported by:



Federal Ministry
for Economic Affairs
and Climate Action

Federal Foreign Office



INTERNATIONAL
CLIMATE
INITIATIVE



Ministry of Environment
Greenhouse Gas Inventory
and Research Center



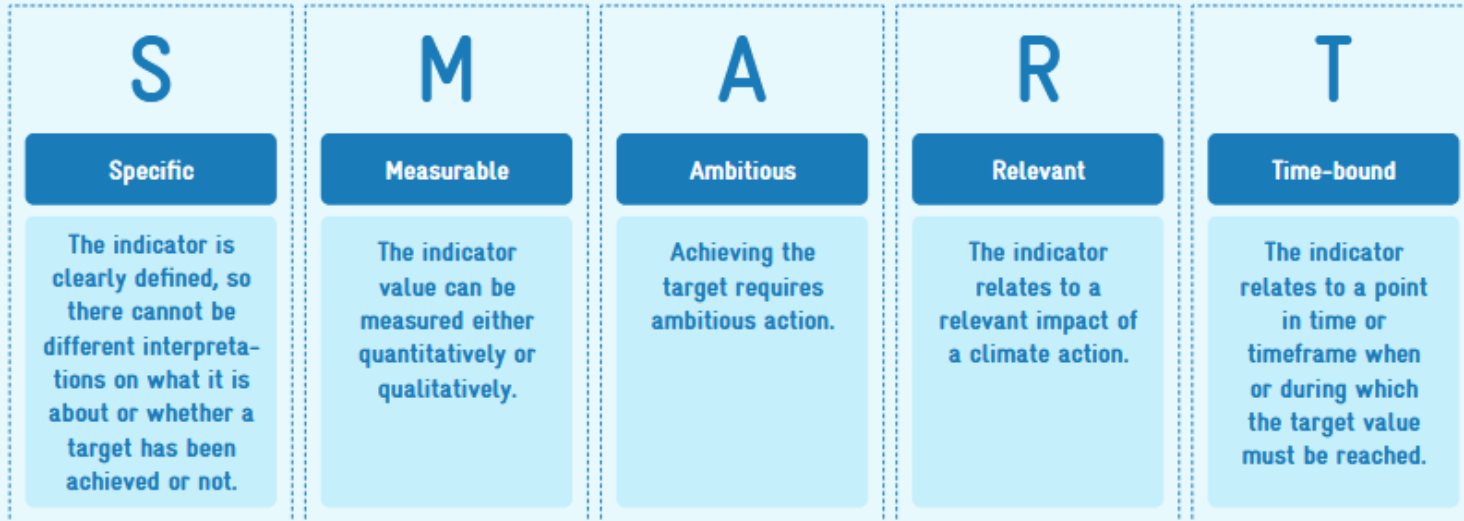
forestry, fisheries
& the environment
Department:
Forestry, Fisheries and the Environment
REPUBLIC OF SOUTH AFRICA

19.03.2024
on the basis of a decision
by the German Bundestag



The SMART concept

Figure 4: The SMART concept



Supported by:



Federal Ministry
for Economic Affairs
and Climate Action

Federal Foreign Office



INTERNATIONAL
CLIMATE
INITIATIVE



Ministry of Environment

Greenhouse Gas Inventory
and Research Center



forestry, fisheries
& the environment

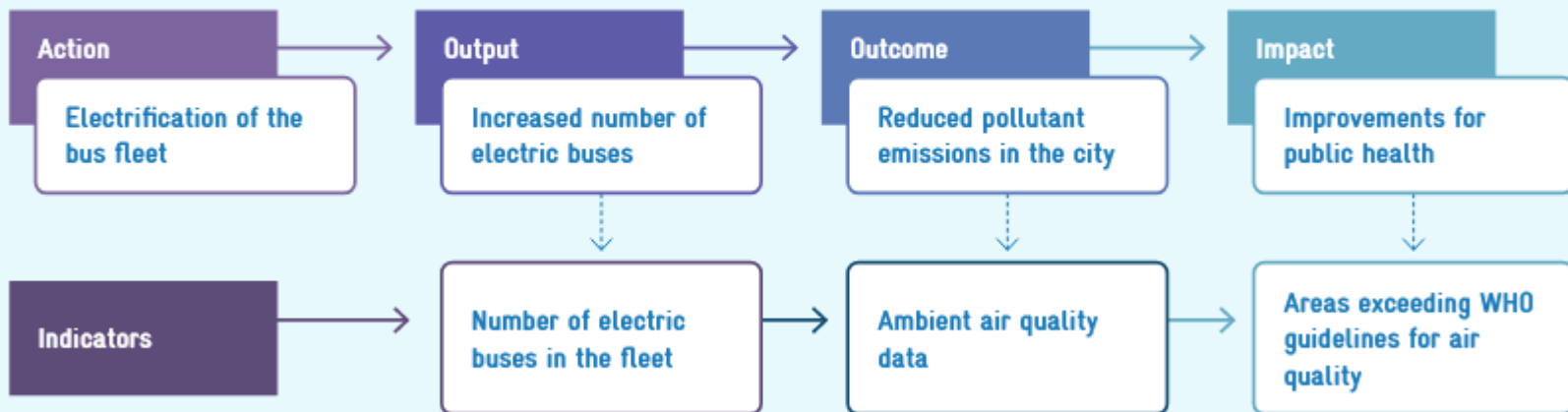
Department:
Forestry, Fisheries and the Environment
REPUBLIC OF SOUTH AFRICA

on the basis of a decision
by the German Bundestag



Identifying Indicators using the Intervention Logic Chain

Figure 6: Illustrative mitigation example of the intervention logic chain in relation to public transport



Source: Authors

Supported by:



Federal Ministry
for Economic Affairs
and Climate Action

Federal Foreign Office



INTERNATIONAL
CLIMATE
INITIATIVE



Ministry of Environment
Greenhouse Gas Inventory
and Research Center



forestry, fisheries
& the environment
Department:
Forestry, Fisheries and the Environment
REPUBLIC OF SOUTH AFRICA

on the basis of a decision
by the German Bundestag



Identifying and compiling NDC indicators

Figure 8: Step by step process – Identifying and compiling progress indicators for NDC targets



Source: Authors

Supported by:



Federal Ministry
for Economic Affairs
and Climate Action

Federal Foreign Office



INTERNATIONAL
CLIMATE
INITIATIVE



Ministry of Environment
Greenhouse Gas Inventory
and Research Center



forestry, fisheries
& the environment
Department:
Forestry, Fisheries and the Environment
REPUBLIC OF SOUTH AFRICA

on the basis of a decision
by the German Bundestag



Example tables for reporting on indicators in Biennial Transparency Reports

CTF Table 1: Description of selected indicators

Indicator(s) selected to track progress	Description
Net GHG emissions and removals in CO₂eq	
Information for the reference point(s), level(s), baseline(s), base year(s) or starting point(s), as appropriate	The reference level in the base year (1990) is 12,345 kt CO ₂ eq.
Updates in accordance with any recalculation of the GHG inventory, as appropriate	The reference level has been recalculated from 12,321 kt CO ₂ eq in the previous national inventory to 12,345 kt CO ₂ eq in the national inventory which is submitted together with this BTR.
Relation to NDC	The indicator is defined in the same metric and unit as the target of the NDC.

Supported by:



Federal Ministry
for Economic Affairs
and Climate Action

Federal Foreign Office



INTERNATIONAL
CLIMATE
INITIATIVE



Ministry of Environment

Greenhouse Gas Inventory
and Research Center



forestry, fisheries
& the environment

Department:
Forestry, Fisheries and the Environment
REPUBLIC OF SOUTH AFRICA



Example tables for reporting on indicators in Biennial Transparency Reports

CTF Table 2: Definitions needed for understanding

Definitions ^a	
Definition needed to understand each indicator:	<p>Indicator 'Net GHG emissions and removals':</p> <p>Net GHG emissions and removals correspond to the annual totals reported in CO₂ equivalents in the latest national GHG inventory. The totals comprise all sectors and gases listed in the CTF table entitled 'Reporting format for the description of a Party's nationally determined contribution under Article 4 of the Paris Agreement, including updates'.</p>

Supported by:



Federal Ministry
for Economic Affairs
and Climate Action

Federal Foreign Office



INTERNATIONAL
CLIMATE
INITIATIVE



Ministry of Environment

Greenhouse Gas Inventory
and Research Center



forestry, fisheries
& the environment

Department:
Forestry, Fisheries and the Environment
REPUBLIC OF SOUTH AFRICA



Reporting on indicators in Biennial Transparency Reports - Adaptation

The following information should be reported in the chapter on climate change impacts and adaptation:

- Assessment of and indicators for:
 - (i) How adaptation increased resilience and reduced impacts;
 - (ii) When adaptation is not sufficient to avert impacts;
 - (iii) How effective implemented adaptation measures are.

Other information on indicators for adaptation may also be reported in the BTR.

Supported by:



Federal Ministry
for Economic Affairs
and Climate Action

Federal Foreign Office



INTERNATIONAL
CLIMATE
INITIATIVE



Ministry of Environment
Greenhouse Gas Inventory
and Research Center



forestry, fisheries
& the environment
Department:
Forestry, Fisheries and the Environment
REPUBLIC OF SOUTH AFRICA



Mentimeter

Supported by:



Federal Ministry
for Economic Affairs
and Climate Action

Federal Foreign Office



INTERNATIONAL
CLIMATE
INITIATIVE



Ministry of Environment

Greenhouse Gas Inventory
and Research Center



forestry, fisheries
& the environment

Department:
Forestry, Fisheries and the Environment
REPUBLIC OF SOUTH AFRICA

19.03.2024
Member of a Commission
by the German Bundestag

12