



Partnership on Transparency
in the Paris Agreement



CBIT-GSP
CLIMATE TRANSPARENCY



Mock TER and using TER results

Sheila Kiconco
Sabino Del Vento

20/03/2026, Windhoek

Supported by:



based on a decision of
the German Bundestag



INTERNATIONAL
CLIMATE
INITIATIVE



forestry, fisheries
& the environment
Department:
Forestry, Fisheries and the Environment
REPUBLIC OF SOUTH AFRICA



United Nations
Climate Change



Technical Expert Review

- Under the ETF, the information submitted by each Party shall undergo a technical expert review (TER) consistent with the MPGs
- The TER review will be implemented in a facilitative, non-intrusive, non-punitive manner, respectful of national sovereignty, and will avoid placing undue burden on Parties.

Supported by:



based on a decision of
the German Bundestag



forestry, fisheries
& the environment

Department:
Forestry, Fisheries and the Environment
REPUBLIC OF SOUTH AFRICA



United Nations

Framework Convention on
Climate Change





GHG inventory

Information to track progress
made in implementing/
achieving the NDC

Climate change impacts
and adaptation (voluntary)

Support provided
to developing countries

**What is
reviewed?**



**What is not
reviewed?**

**Adequacy of NDC and indicators
chosen**

**Adequacy of
domestic actions**

**Adequacy of
support provided**

**Developing country's choice
to invoke the specific flexibility
provision in the MPGs**

Credit: UNFCCC



Guiding principles of MPGs

Decision 18/CMA.1, Annex

I.B. Guiding principles

- a) Building on and enhancing the transparency arrangements under the Convention, recognizing the special circumstances of the least developed countries (LDCs) and small island developing States (SIDS), and **implementing the transparency framework in a facilitative, non-intrusive, non-punitive manner, respecting national sovereignty and avoiding placing undue burden on Parties;**
- b) The importance of facilitating **improved reporting and transparency over time;**
- c) Providing flexibility to those developing country Parties that need it in the light of their capacities;
- d) Promoting transparency, accuracy, completeness, consistency and comparability;
- e) **Avoiding duplication of work and undue burden** on Parties and the secretariat;
- f) Ensuring that Parties maintain at least the frequency and quality of reporting in accordance with their respective obligations under the Convention;
- g) Ensuring that double counting is avoided;
- h) Ensuring environmental integrity.

VII.A Technical expert review

147. The technical expert review shall pay particular attention to the respective **national capabilities and circumstances** of developing country Parties.

148. In accordance with Article 13, paragraph 3, of the Paris Agreement, the **technical expert review will be implemented in a facilitative, non-intrusive, non-punitive manner, respectful of national sovereignty, and will avoid placing undue burden on Parties.**





The TER process involves 4 key actors, with specific roles defined for LRs

Party

- Cooperate in the BTR review process
- Respond to questions of TER team and provide clarifying information

Lead reviewers

- Oversee the work of the TER team
- Ensure that the TER are conducted in accordance with the MPGs
- Ensure the quality and objectivity of the TER and provide for the continuity, consistency across Parties and timeliness of the TER
- Communicate, monitor, coordinate review and preparation of TER report
- Give priority to issues raised in previous TER reports
- Provide technical advice to the members of the TER team

Experts

- Review the reported information in accordance with the MPGs
- Participate in the review week and engage with experts
- Identify (Draft) Areas of Improvement and Capacity-Building Needs
- Develop the Technical Expert Review Report

Secretariat

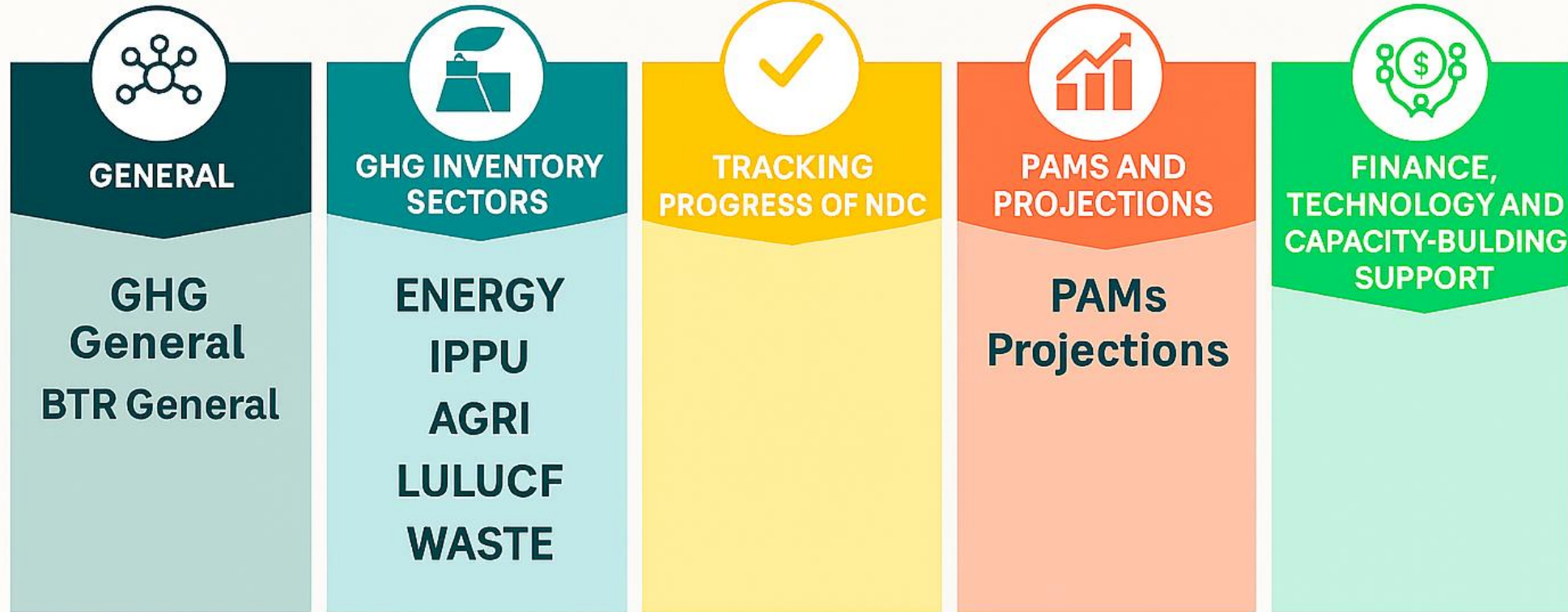
- Organize TER team
- Facilitate communication
- Compile and edit TER report
- Facilitate annual LRs meetings





TECHNICAL EXPERT REVIEW TEAM

IN-COUNTRY REVIEW OF THE FIRST BIENNIAL TRANSPARENCY REPORT



Supported by:



based on a decision of
the German Bundestag



forestry, fisheries
& the environment

Department:
Forestry, Fisheries and the Environment
REPUBLIC OF SOUTH AFRICA



United Nations
Framework Convention on
Climate Change





Mock TER

- You received the Technical Expert Review Report (TERR) for the BTR1 of Kenya and South Africa
- Read the ‘question’ from TER that refers to a specific area of improvement presented in the TERR (identified by an ID# and highlighted in yellow)
- For each assigned question from the TER, prepare a response as if you are the Party being reviewed, using the information provided in the relevant section of the TERR.





Mock TER

During the report-back session (5 minutes per table/question), your response should include:

- The information that the Party provided in their response (according to the TERR)
- Whether the requested improvement is linked to a recommendation or an encouragement
- The reporting requirement to which the improvement is related
- What actions the Party is expected to take in order to address the issue identified by the TER



Kenya

ID#	Page	Question
4.I.3	8	<p>The Party reported in its NID (p. 47) that it used a tier 1 method to estimate CO₂ emissions for category 2.A.1 (cement production), which is identified as a key category. The technical expert review team noted that the use of a tier 1 method is not consistent with the method recommended by the decision trees in the 2006 IPCC Guidelines (vol. 3, chap. 2, p. 2.9, figure 2.1) and is therefore not in accordance with paragraphs 20–21 of the MPGs.</p> <p>Could the Party clarify the reasons for using a tier 1 method instead of a tier 2 method for this key category?</p>
5.A.2	11	<p>The Party reported in its NID (p.64) that it used a tier 2 methodology to estimate CH₄ emissions from enteric fermentation for category 3.A.1. NID table 5.5 presents the annual total animal populations and IEFs used for dairy cattle. However, the TERT identified a discrepancy for 2022: the IEFs reported in NID table 5.5 (43.28 kg CH₄/head/year) differ from the IEFs derived by dividing the total reported emissions by dairy cattle population using data in the same table (38.46 kg CH₄/head/year). This inconsistency corresponds to a difference of 314 t CH₄ or about 5 per cent of total CH₄ emissions for 2022.</p> <p>Could the Party explain the discrepancy between the IEFs reported in the NID table 5.5 and the IEFs calculated using data in the same table ?</p>





Kenya

ID#	Page	Question
4.1.4	8	<p>The Party reported in its NID (p.47 and table 4.4) the amount of imported clinker used to estimate emissions for category 2.A.1 cement production. However, the TERT noted that the time series for CO2 emissions from cement production may not be consistent, as data on clinker imports, which should be subtracted from the total amount of cement, are only available from 2011 onward. As a result, CO2 emissions for 1990 up until 2011 may be overestimated.</p> <p>Could the Party explain how data on clinker imports have been used to estimate CO2 emissions for 1990 up until 2011?</p>
8.2	19	<p>The Party reported in its BTR that it enacted its Climate Change Act in 2016 and revised it in 2023 to include provisions for establishing carbon markets. However, the TER noted that the information provided does not clearly describe the institutional arrangements in place for tracking internationally transferred mitigation outcomes (ITMOs).</p> <p>Could the Party clarify the institutional arrangements established or planned for tracking ITMOs, including the roles and responsibilities of the entities involved?</p>



South Africa

ID#	Page	Question
3.E.1	3	<p>In the NID, the Party compared the reference and sectoral approaches, reporting the results for 2000–2020 in figure 3.21 (p.91) and providing detailed breakdowns of fuel consumption across solid, liquid and gaseous fuels in annex III. The emission estimates reported under the reference approach are higher than those reported under the sectoral approach.</p> <p>Although the Party reasons for the discrepancies is provided, could the Party explain the reasons for the significant gap between the CO2 emission estimates under the reference and sectoral approaches for 2000–2020 (19 per cent on average)? Could the Party did not explain why estimates for 2021 and 2022 were not included for the reference approach?</p>
7.W.5	8	<p>South Africa reported in CRT 5.B activity data (AD) on a dry weight basis for this category. However, data on waste amounts are usually obtained on a wet weight basis by measurement, and the NID contains no information on the properties of the AD or whether a wet or dry weight basis was used.</p> <p>Could the Party clarify the properties of the AD and whether a wet or dry weight basis was used?</p>



South Africa

ID#	Page	Question
11.1	13	The Party reported a description of its PaMs by sector in both narrative and tabular format and included a description of interactions between PaMs in the annex to the BTR (section 8). Could the Party not provide information on costs and non-GHG mitigation benefits for its PaMs?
13.3	17	The Party did not report on projections of key indicators to determine progress towards its NDC in CTF table 10 owing to limited data and insufficient understanding of the key drivers for natural disturbances. Could the Party explain why it did not report on projections of key indicators to determine progress towards its NDC in CTF table 10?



Partnership on Transparency
in the Paris Agreement



CBIT-GSP
CLIMATE TRANSPARENCY



Thank you

Sabino Del Vento

Sabino.delvento@ricardo.com

Supported by:



based on a decision of
the German Bundestag



forestry, fisheries
& the environment
Department:
Forestry, Fisheries and the Environment
REPUBLIC OF SOUTH AFRICA



United Nations
Climate Change